

ROSS 2.6

October 2010

Release Notes

RepliWeb Operations Suite for SharePoint (ROSS) enables organizations to effectively manage Content and Application lifecycles within SharePoint® environments, resulting in accelerated release cycles and reduced administrative and operating expenses.

ROSS provides selective or comprehensive replication of SharePoint content throughout multi-stage (Development, Staging, and Production) and multi-site (distributed) environments. ROSS manages the deployment / replication of site collections, sites, content, solutions, workflows, structure, look and feel, navigation, features, content types, etc. Recognized for its ability to accelerate deployment timelines, ROSS ensures production readiness of sites and invokes 'best practices' for change control processes.

Agnostic to environment variations, ROSS is a scalable solution built for critical enterprise deployment processes. It includes comprehensive features, such as different synchronization logics, scheduling options, a variety of replication scopes, rollback, recovery and integrity mechanisms, robust APIs, and tools for the delegation of ROSS jobs to task owners.

ROSS 2.6 introduces SharePoint Server 2010 replication support, which covers the replication of a variety of SharePoint 2010 assets such as Document Sets, Taxonomy items, Sandbox solutions, workflows, templates and galleries, Record Management elements and more.

Several GUI enhancements have also been made including a new Ribbon look and feel, main list grouping and sorting capabilities, and Console Pane organization.

ROSS 2.6 can be used in SharePoint 2010 (SPS and SPF) environments or in SharePoint 2007 (MOSS and WSS) environments.

ROSS Basic Feature Set

ROSS delivers enterprise-strength replication and deployment capabilities with enhanced layers of control and governance. Functionalities include:

- **Automation Controls** – With ROSS, organizations can use a combination of controls to schedule and kick-off jobs. These options allow for greater publishing control and accelerated release cycles.
- **Data Management** – Providing selective or comprehensive replication capabilities of functional elements and content throughout multi-stage (development, staging, production) and multi-site (distributed) environments, ROSS manages the

deployment/replication of sites, site collections, content, solutions, workflows, structure, look and feel, navigation, features, content types, etc.

- **Solution Deployment** – From one central Console, organizations can deploy, upgrade, or retract multiple SharePoint solutions (.WSPs) in a defined sequence across Farms.
- **Rollback** – Enables Administrators to quickly "undo" deployment errors in the event of failure or unintentional publishing, ROSS's Rollback feature allows administrators to roll back any content, code, or configuration change to a previous state.
- **Incremental Updates** – ROSS efficiently determines deltas, transferring only the differences between source and target environment(s). This intelligent approach to deployment saves time and bandwidth, dramatically shortening content release cycles.
- **Guaranteed Delivery** – ROSS's proprietary transfer engine accelerates and guarantees the delivery of assets from source to target(s). It also includes options for recoverability, compression, and security.
- **Job Delegation** – Enables Administrators to accelerate release cycles and govern changes by assigning pre-configured jobs to non-privileged users (developers) to submit on-demand through a user-friendly Web UI.
- **Reporting** – Detailed reporting that is useful for peace-of-mind, trouble-shooting and auditing.

SharePoint 2010 Assets

ROSS 2.6 replication jobs support the replication of new SharePoint 2010 assets, such as:

- Taxonomy – Terms, term sets, enterprise keywords being used in the scope of the defined replication. The replication scope covers taxonomy elements being used in the defined source that do not exist on the target.

NOTE: Since the term store is not included in the replication scope, please make sure it is properly maintained by the farm administrator before replication takes place.

- Content Type Hub - Sites using content types stored in a content hub, as well as the replication of the site collection's content type hub itself.
- Record Management - SharePoint Record Center and in-place records as well as the states of the items, such as "Held" or "Record".
- Sandbox Solutions – Deployed and replicated as part of a Site Replication job.
- Document Sets – Replicated with all the relevant properties and customizations.
- Workflows – Both SharePoint 2010 and Nintex Workflow 2010.
- Templates and Galleries that were added in SharePoint 2010.
- Themes – Both regular and customized 2010 themes.

GUI Enhancements

ROSS 2.6 introduces several GUI enhancements, including:

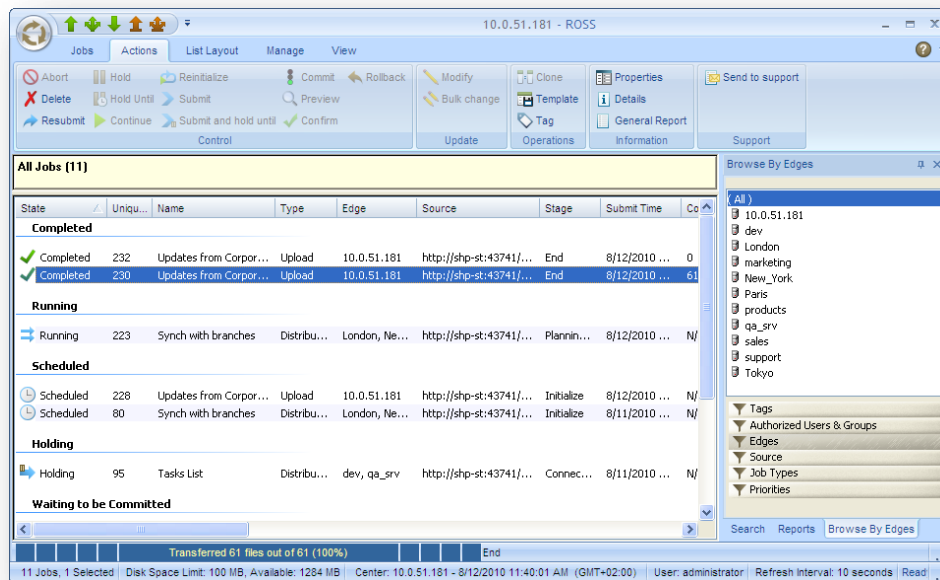
Console Ribbon User Interface

For easy access to ROSS functionality, a new Ribbon panel is provided in addition to the menus and toolbars found in previous ROSS versions. This panel organizes ROSS actions, buttons, and commands as a set of tabs, each grouping the relevant items. Using ROSS ribbons, you can easily navigate to the desired action, button or command.

NOTE: You can still choose to use the menu interface used in past versions.

User Controls

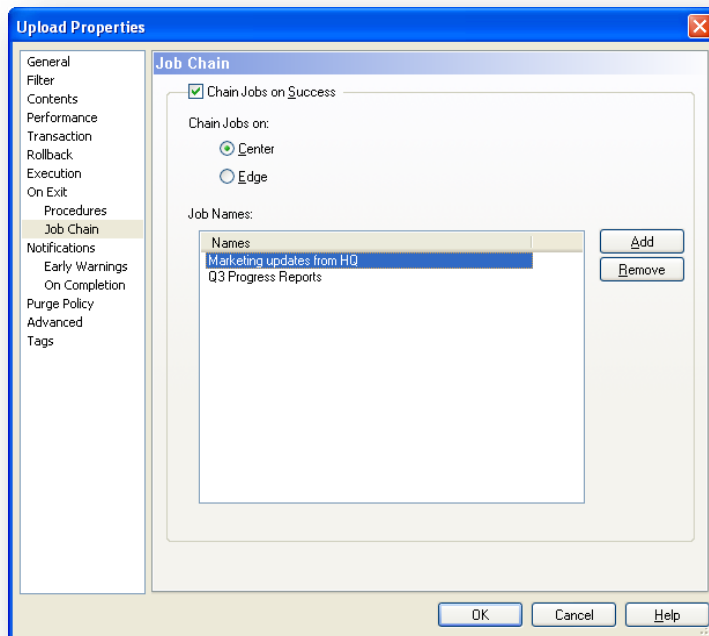
ROSS 2.6 Console extends job viewing capabilities by enabling users to sort and/or group jobs in the Job List according to a certain property. The new look and feel includes double sorting and Console Pane organization capabilities, as well as a new job icon graphics design.



Job Chaining

ROSS 2.6 enables you to implement dependency-based scheduling, in which one or more jobs are executed upon the successful completion of a previous job. Additionally, for multiple Center environments, chaining jobs located on different Centers is supported.

The new Console grouping and sorting capabilities, along with dedicated columns enable focusing on chained jobs' families.



NOTE: Along with the additions and enhancements highlighted in this document, ROSS 2.6 includes general improvements and fixes accumulated since ROSS 2.5.

Known Issues

The following is a list of known ROSS 2.6 issues and behaviors:

Site Replications

- The replication of BDC columns is supported. Before replication, make sure the target farm is configured with the source farm's BDC permissions. (2007)
- The replication of BCS columns is supported. To enable replication, make sure that the same External Content Type used by the source site is created on the target and the relevant farm permissions are granted in the appropriate target Service Applications. (2010)
- To replicate a Web application's site collections, which use taxonomy terms, make sure that the target contains termsets that have the same names as the termsets being used by the source site collections. (2010)
- Site collection term sets are replicated as farm term sets to the target. This is due to a known SharePoint limitation. (2010)
- Folder retention policies are currently not replicated. (2010)
- Customized SharePoint ribbon buttons may not be replicated correctly. (2010)
- The replication of custom list alerts is currently not supported. (2010)

Redundant Replications

- In some scenarios, a few entities may be redundantly replicated to the target. This redundancy is negligible and does not affect target operability. (2007/2010)
- The "Users and Groups" list of sites with modified permissions may appear with redundantly created columns on the target. (2007)
- New items' column values or newly created lists' items may be redundantly created. A subsequent replication will fix this. (2007/2010)

Solution Deployments

- When replicating all of a web application's site collections, hidden columns in site collections that contain a sandboxed solution are exposed on the target. (2010)
- Solution Deployment jobs that are set to activate a solution on a specific web application will activate all web applications on SharePoint 2010 farms but will not activate any web applications on SharePoint 2007 farms.

Job Filters

- The *Metadata Filtering* option filters items and files only, not folders. Therefore, filtering document sets with the Filter wizard's *Metadata* or *Content Type Filtering* option is not possible. (2010)

- Using the ROSS Filter wizard's *Metadata Filtering* option to replicate items with a specific "Moderation Status" may sometimes fail. (2007)

Personal Sites

- The association of personal sites is supported for personal sites that were created based on personal site templates. (2007/2010)

GUI

- The *Job Progress Bar* may display incorrect file transfer values for distribution jobs.
- Logging in to ROSS Web UI with a username that contains special characters (e.g. #, %) may cause some unexpected behaviors such as Distribution Job Preview windows not displaying the job's Edge contents and the *Refresh* button not working properly. Additionally, the *Select* login drop-down list incorrectly displays such usernames.
- In site replication jobs set to *Site to Site Migration*, the site's sub-sites cannot be selected from the Filter Wizard.
- On Completion/Early Warnings notification emails may not be sent for resubmitted Distribution jobs.
- The Bulk Changes option does not currently support modifying Solution Deployment jobs or Contents tab settings.
- Buttons may appear deformed when resizing the Filter tab's *Browse* window. This is just a display issue and does not affect button operability.

Miscellaneous

- For non-English languages, the same language packs may need to be installed on source and target. (2007/2010)
- In some scenarios, the replication of SharePoint Foundation sites may not be supported. If this occurs, please contact support (an update addressing this scenario is available).
- A root drive (e.g., C: or D:) cannot be used as a Rollback job's recording directory. (2007/2010)

Fixed Issues and Improvements

This version includes accumulative updates as well as fixes and improvements made since the release of version 2.5 and the earlier 2.6 beta versions. The following issues and improvements have been addressed for this ROSS version:

- In some scenarios, workflows (such as SharePoint Designer List and Site workflows) would not be replicated. (2010)
- Items stored in a list with a “SharePoint Retention Policy” could not be replicated. (2010)
- The Replication of “Assets Web Database” templates is now supported. (2010)
- Web parts that were created by a sandboxed solution on the source would not be properly replicated. (2010)
- Item columns that use tagging-disabled termsets would not be replicated to the target. (2010)
- In some scenarios, mainly when creating new sites, the target would show redundant automatically created items, such as Blog posts or Announcements. (2010)
- When installing third-party solutions, certain web parts could become unavailable, causing the replication job to fail. This issue has been resolved by ignoring the replication of such unavailable web parts as these web parts do not affect target operability. (2007)
- Replicating a non-inheriting site with the *Permissions* option enabled in the job’s Contents tab would not replicate the source site collection’s permissions. (2007/2010)
- In Solution Deployment jobs that contained solutions with web application-level features, the solution activation phase would take a few minutes to complete.
- “Anonymous Access” permissions would not be replicated. (2007/2010)
- The permissions of target sub-sites would be removed when a new sub-site without inheritance was replicated with permissions. (2007)
- The association of SharePoint Designer Reusable workflows is now supported. (2010)
- In some scenarios, item permissions would not be replicated to the target. (2010)
- Rollback performed on jobs that were set to *Backup* synchronization logic would not remove sites created during the original job replication. (2010)
- Using ROSS CLI/API (e.g., `-granularity_options_include`) to replicate a site’s Permissions via ROSS CLI/API is now supported. (2007/2010)
- In some scenarios, Job Preview windows could not be accessed through ROSS Web UI.
- In Preview-enabled jobs using *Mirror* logic, selecting to cancel the deletion of target entities (items, lists, sites, etc.), or the transfer of source entities from sites using a sandboxed solution, was not supported from the Job Preview window. (2010)

- An incorrect *Stage* value would appear for Site Distribution and Solution Deployment Distribution jobs in ROSS Console and Web UI.
- In a Distribution Job Preview window, resetting manual Snapshot changes would prevent confirming additional changes made to this particular window.
- Job Preview windows accessed through ROSS Web UI would only allow users to confirm or abort the Preview job but not make changes to the replication.
- In ROSS Web UI, the *Select Edge* drop-down list in Distribution Job Preview windows would sometimes not display the job's Edges.
- The *Read Only* view is now available for Distribution Preview windows accessed through a customized ROSS Web UI.
- When selecting to apply Bulk Changes to both Replication and Distribution jobs, the Bulk Changes dialog would open the Distribution Bulk Change dialog instead of opening the Schedule - Bulk Change window.
- In classic Menu mode, redundant *New MSI Deployment* options would appear in the View menu, and a redundant *Reinitialize* option would appear in the Actions menu.
- The right-click menu's *Hold* option would appear enabled for jobs on hold.
- The replication of BDC columns is now supported. (2007)
- The replication of BCS columns is now supported. (2010)

Prerequisites

It is recommended to install the following prior to ROSS installation and activation:

- SharePoint Server 2010 and SharePoint Foundation 2010, or
- MOSS 2007 and WSS 3.0 SP1 (12.0.0.6219)
 - SharePoint Services 3.0 cumulative update package (12.0.0.6327)
- It is recommended to have the same ROSS version installed on all participating Centers/Edges.
- Microsoft .NET Framework 3.5 SP1 is required on the ROSS Console machine for using the new Preview functionality.

####

For any additional information, contact us at ross@repliweb.com