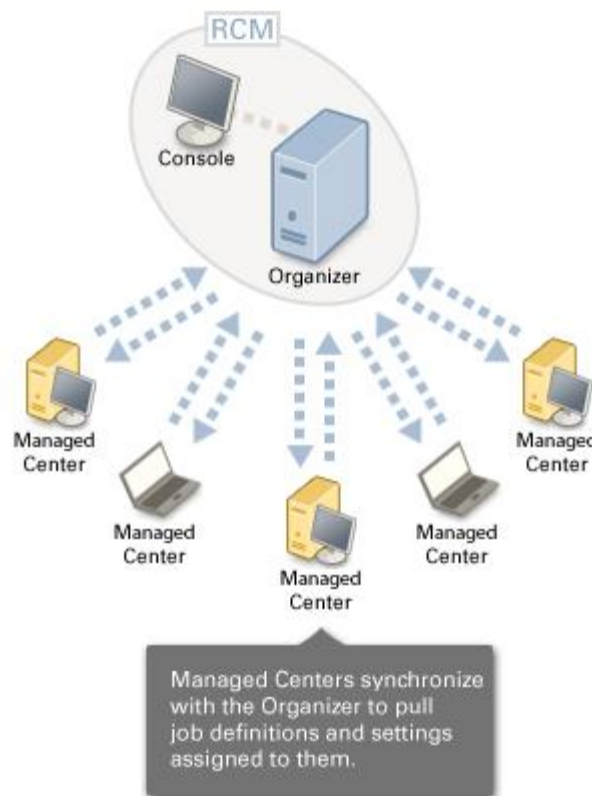


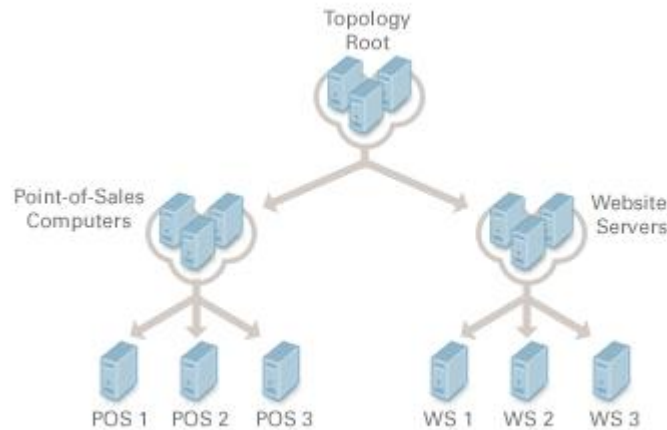
RCM 2.1 Release Notes June 2011

Managing large-scale deployments of R-1 Centers can be an extremely time-consuming process, especially when dealing with hundreds of different configurations spread over different geographical locations. Thankfully, a solution is at hand. RCM is tailored to meet the replication management needs of a wide variety of organizations, such as enterprises that need to synchronize thousands of kiosks on a daily basis, companies that need to update multiple branches, each with its own unique configuration and organizations that need to synchronize data and applications to numerous mobile computers.



Easy Administration

Visual representation and management of large scale deployments is facilitated by the creation of logical topology graphs via the Organizer Console.



Managed Centers can be logically arranged under different groups, enabling settings and job definitions to be shared by all the group members. Imagine, for example, that 300 kiosks (Managed Centers) need to be updated daily with price and product specification lists which reside on a UAT server. With RCM, instead of having to define the same job several times on each of the 300 kiosks, now the job only needs to be defined once for the Kiosk Group. Once it is defined, the job is automatically synchronized to all of the group members.

Monitoring

Regular health reports submitted from the Managed Centers keep RCM users informed about connectivity and disk space issues as well as the status of active replication jobs, enabling any problems to be quickly resolved.

Security

Like all RepliWeb products, RCM answers the stringent security needs of your organization. Managed Centers pull their associated settings and job definition from the Organizer, meaning that firewalls do not need to be opened for inbound connections. Moreover, both the connection between the Console and the Organizer and the synchronization process that occurs between the Organizer and the Managed Centers can be SSL secured.

Key Features

- Centrally manage a widespread R-1 deployment
- Create and manage a logical group topology of R-1 servers
- Manage jobs definitions to be pulled and executed by R-1 servers
- Define system settings that will be inherited by R-1 servers
- Monitor R-1 server topologies such as connectivity to RCM and job execution
- Scale replication jobs to virtually distribute to thousands of edges in 1 job