

R-1 to RCM Migration Guide

For Windows, Linux and UNIX operating systems

July 7, 2011

RepliWeb, Inc., 6441 Lyons Road, Coconut Creek, FL 33073
Tel: (954) 946-2274, Fax: (954) 337-6424
E-mail: info@repliweb.com, Support: <http://support.repliweb.com>

Copyright © 2011 RepliWeb® Inc., All Rights Reserved

The information in this manual has been compiled with care, but RepliWeb, Inc. makes no warranties as to its accuracy or completeness. The software described herein may be changed or enhanced from time to time. This information does not constitute a commitment or representation by RepliWeb and is subject to change without notice. The software described in this document is furnished under license and may be used and/or copied only in accordance with the terms of this license and the End User License Agreement.

No part of this manual may be reproduced or transmitted, in any form, by any means (electronic, photocopying, recording or otherwise) without the express written consent of RepliWeb, Inc.

Windows, Windows XP and Windows Vista are trademarks of Microsoft Corporation in the US and/or other countries. UNIX is a registered trademark of Bell Laboratories licensed to X/OPEN.

Any other product or company names referred to in this document may be the trademarks of their respective owners.

Please direct correspondence or inquiries to:

RepliWeb, Inc.
6441 Lyons Road
Coconut Creek, Florida 33073
USA

Telephone: (954) 946-2274
Fax: (954) 337-6424

Sales & General Information: info@repliweb.com
Documentation: docs@repliweb.com
Technical Support: <http://support.repliweb.com>
Website: <http://www.repliweb.com>

Table of Contents

1.	Overview	1
2.	System Requirements	2
3.	Backing Up R-1	3
4.	Upgrading to R-1 Version 5.0.....	5
5.	Installing and Configuring RCM	6
	Installing RCM	6
	Using the Windows Installation Procedure	6
	Using CLI	12
	Creating a Group on RCM.....	14
	Using Console GUI	14
	Using CLI	15
6.	Configuring R-1 as a Managed Node on RCM	16
	Using Console GUI.....	16
	Using CLI	21

1. Overview

This document guides you on how to successfully convert your standalone R-1 installation to a Managed Node on an RCM Organizer.

The process comprises four major steps:

1. [Backing up](#) R-1's configurations, jobs, templates and containers
2. [Upgrading](#) R-1 to version 5.0
3. [Installing](#) RCM and creating an RCM Group that R-1 will join
4. [Configuring](#) R-1 as a Managed Node on RCM and setting R-1 to maintain its jobs and Center Management settings

2. System Requirements

Make sure your environments meet the following requirements:

	R-1		RCM
	UNIX	Windows	
Operating System	<ul style="list-style-type: none"> ▪ Solaris 2.6 and above (Sun Sparc) ▪ HP-UX 11 and above (Itanium) ▪ Red Hat Linux 7.0 and above (Kernel 2.6.x) / Linux (SUSE) ▪ Red Hat Enterprise Linux 3.0 and above / Fedora ▪ Red Hat Enterprise Linux 4.4 and above (64-bit) ▪ AIX 4.3 and above (IBM RS/600) 	<ul style="list-style-type: none"> ▪ Windows Server 2000 ▪ Windows Server 2003 (32/64-bit Editions) ▪ Windows XP (32/64-bit Editions) ▪ Windows Vista (32/64-bit Editions) ▪ Windows Server 2008 (32/64-bit Editions) ▪ Windows 2008 R2 ▪ Windows 7 	<ul style="list-style-type: none"> ▪ Windows Server 2000 ▪ Windows Server 2003 (32/64-bit Editions) ▪ Windows XP (32/64-bit Editions) ▪ Windows Vista (32/64-bit Editions) ▪ Windows Server 2008 (32/64-bit Editions) ▪ Windows 2008 R2 ▪ Windows 7
Installation package	r1_platform.tar.Z *	r1_win.exe	rcm_win.exe
Disk space	Available disk space should be at least 6 times the size of the compressed package downloaded from the web (i.e. if your web .z file is 10 MB, you need at least 60 MB to perform the installation).	500 MB	500 MB
Logged in user	Root	Administrator privileges required	Administrator privileges required
RAM	No requirements		No requirements

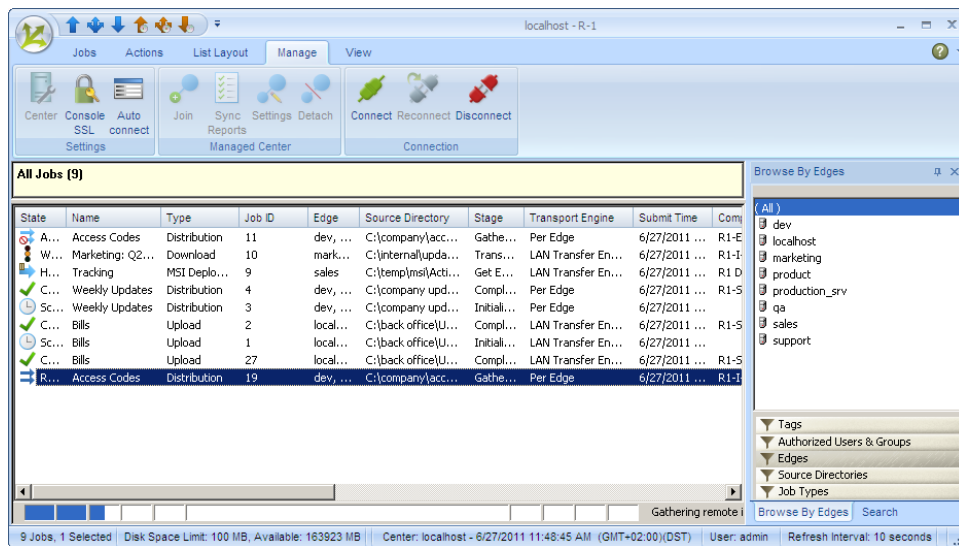
3. Backing Up R-1


It is recommended to back up your R-1 installation's management settings, jobs, templates and containers before upgrading to version 5.0. This way, you can restore your installation's original settings at a later time, if needed.

To back up R-1:

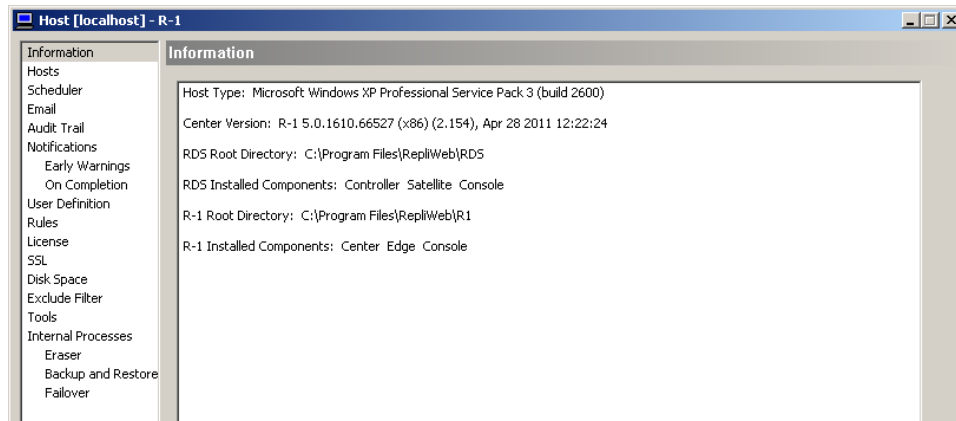
1. Connect to the Center you want to back up.

R-1 Console is displayed.



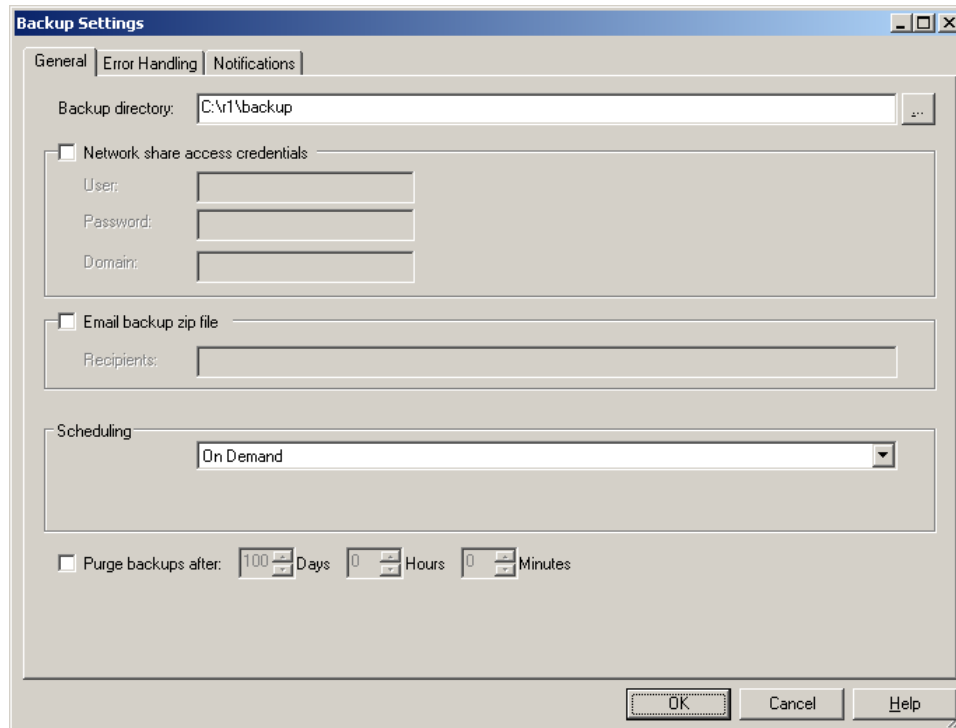
2. Open the **Center Management** dialog either by clicking the  button in the **Manage** ribbon, or by clicking the **Manage** option in the Console's menu bar and selecting the **Center** option.

The **Center Management** dialog is displayed.



3. In the dialog's left pane, click the **Backup and Restore** option and then click the **Backup Settings** button.

The **Backup Settings** dialog is displayed.



4. In the **General** tab, browse to the **Backup directory** in which you want to store R-1's backup information and click **OK**.
5. In the **Backup and Restore** tab, click the **Backup Up Now** button.
A new Backup process is initiated.
6. When the Backup process completes, click **Close** to close the **Center Management** dialog.
7. Close **R-1 Console**.

Next, upgrade your R-1 installation to version 5.0, as described in the following chapter.

4. Upgrading to R-1 Version 5.0

Follow these steps to upgrade your R-1 installation to version 5.0. Pre-5.0 versions are not compatible with RCM.

NOTE: Installing or upgrading R-1 does NOT require reboot.

- Using the Windows Console GUI, close the Console before running the installation kit.
- If opened, close the Windows Services window. The installation will automatically stop and start the Scheduler processes.
- If you are upgrading a production network, we recommend first upgrading the servers performing as Edges.
- If you accidentally upgraded to a 32-bit R-1 kit on a 64-bit environment, you should make sure R-1 backup has been performed, completely uninstall the 32-bit kit and then re-install the 64-bit kit.

To upgrade to R-1 5.0:

1. Download the R-1 5.0 version from the R-1 Download Page.
2. Make sure you backed up your containers, templates, and R-1 license, as described in the previous chapter.

For more information about backing up containers and templates, please search our Knowledge Base: http://www.repliweb.com/search_kb.

3. Upgrade the Edges first and then the Center:
 - In the Windows Wizard setup, select **Repair/Update** to install over the previous installation.
 - Using CLI:
 - Using R-1 qualifiers, set:** `set RW_INSTALL_MODE=silent`
Then, run the relevant R-1 kit, for example, `R1_x86.exe /s`
 - Using msi**, from the extracted R-1 installation files directory, run: `msiexec /fvamuse r1.msi`
 - Using UNIX, simply install over the existing installation.
4. Restore your containers, templates, and your license, if needed.

NOTE: In Console GUI, after performing an upgrade, if all of the jobs are in Administrative hold, uncheck the **Hold all running jobs** option in the **Manage / Scheduler** tab.

Next, install and configure RCM according to the following chapter.

5. Installing and Configuring RCM

This chapter describes the RCM installation.

Installing RCM

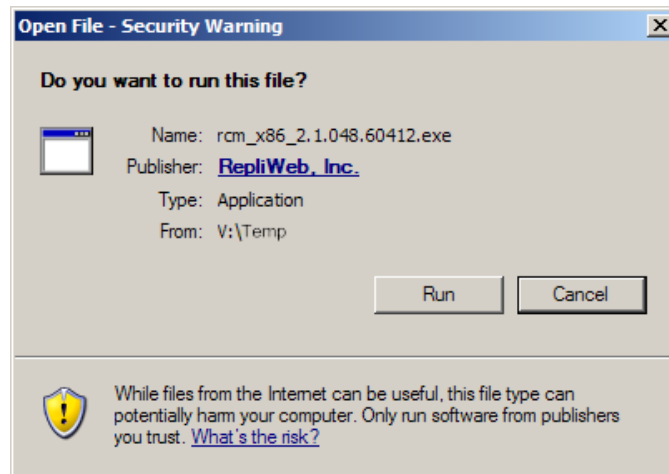
RCM can be installed using Windows or [CLI](#).

Using the Windows Installation Procedure

To install using the RCM setup wizard:

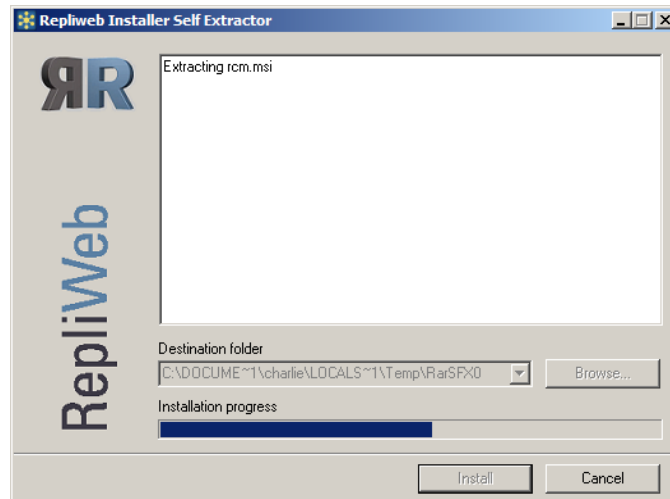
1. In **Windows Explorer**, navigate to the path of the installation package and double click the installation file `rcm_win.exe`.

The **Open File – Security Warning** screen is displayed.



2. Click **Run**.

The **RepliWeb Installer Self Extractor** screen is displayed.

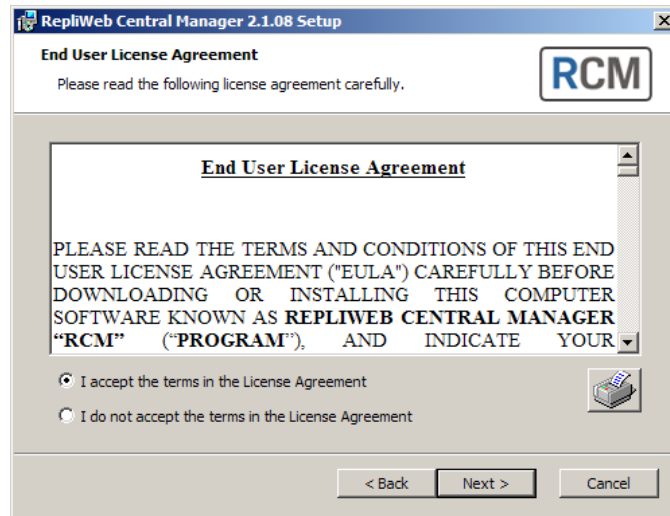


Once the **RCM extraction** completes, the **setup wizard opens**.



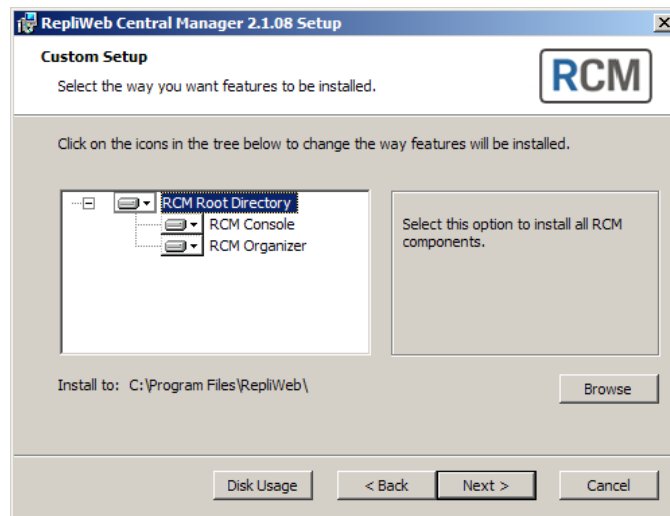
3. Click **Next**.

The **End-User License Agreement** screen is displayed.



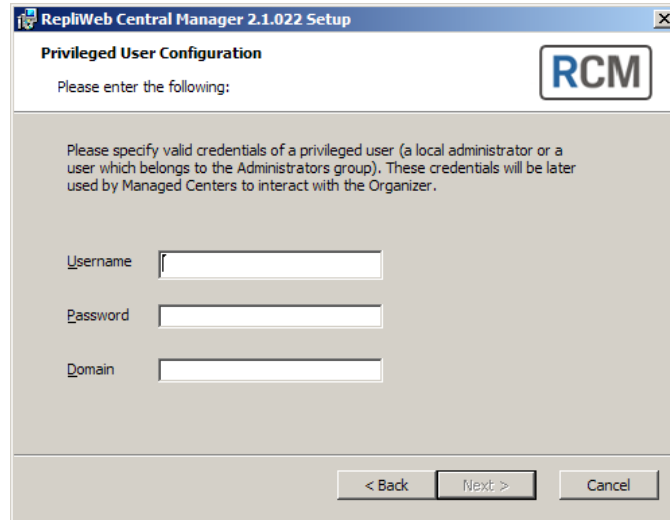
4. After reading the agreement, select the **I accept the terms in the License Agreement** option and then click **Next**.

The **Custom Setup** screen is displayed.



5. Select the RCM components you want to install.
6. To change the default installation directory, click **Browse** and select a different directory.
7. Click **Next**.

The **Privileged User Credentials** screen is displayed.

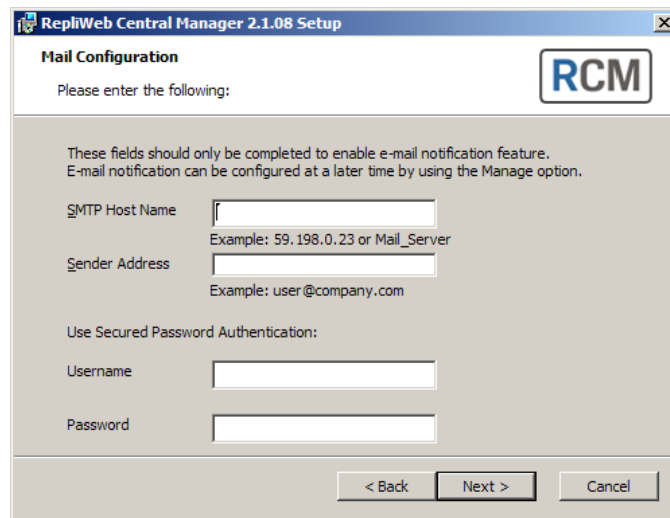


The screenshot shows a window titled "RepliWeb Central Manager 2.1.022 Setup" with a sub-header "Privileged User Configuration" and the RCM logo. The text reads: "Please enter the following:" followed by "Please specify valid credentials of a privileged user (a local administrator or a user which belongs to the Administrators group). These credentials will be later used by Managed Centers to interact with the Organizer." Below this are three input fields labeled "Username", "Password", and "Domain". At the bottom are buttons for "< Back", "Next >", and "Cancel".

8. Enter the credentials of a local administrator or a member of the Administrators Group.

The credentials will be used to synchronize settings, job definitions, job status information and health reports between the Managed Nodes and the Organizer.

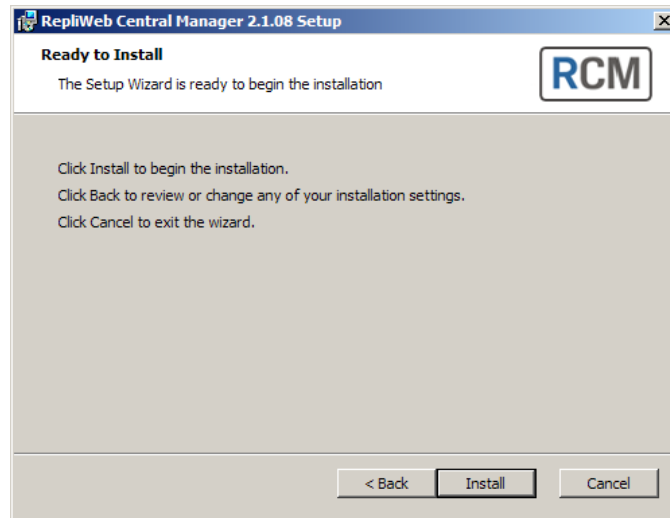
The **Mail Configuration** screen is displayed.



The screenshot shows a window titled "RepliWeb Central Manager 2.1.08 Setup" with a sub-header "Mail Configuration" and the RCM logo. The text reads: "Please enter the following:" followed by "These fields should only be completed to enable e-mail notification feature. E-mail notification can be configured at a later time by using the Manage option." Below this are three input fields: "SMTP Host Name" (with example: 59.198.0.23 or Mail_Server), "Sender Address" (with example: user@company.com), and "Use Secured Password Authentication:" with sub-fields for "Username" and "Password". At the bottom are buttons for "< Back", "Next >", and "Cancel".

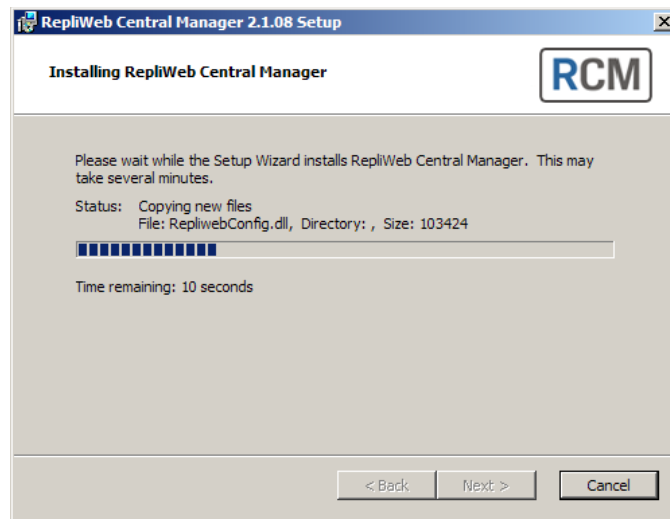
9. Configure e-mail settings as follows:
 - a. In the **SMTP Host Name** field, specify the server name or IP address of your SMTP server.
 - b. In the **Sender Address** field, specify the text that you want to be displayed in the **From** column of the recipient's e-mail client.
 - c. If your SMTP Server requires a user name and password, specify the user name and password in the designated fields.

10. Click **Next**. The **Ready to Install** screen is displayed.

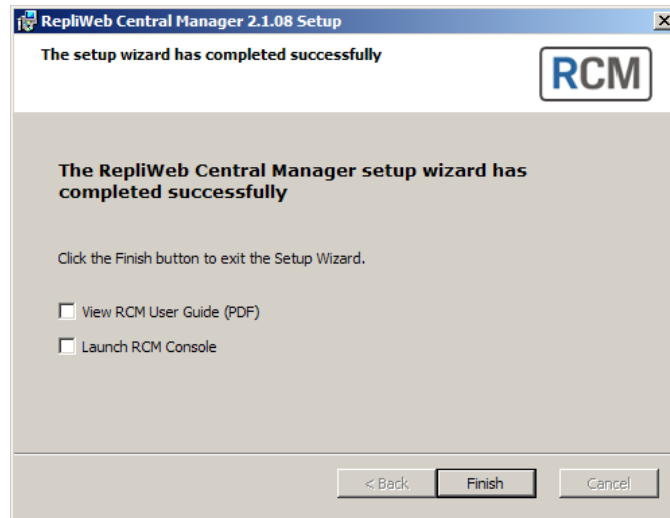


11. Click **Install**.

The installation progress screen is displayed.



After the installation completes, the **final** screen is displayed.



12. Click **Finish** to complete installation.

Next, create the RCM Group that will include the new Managed Node, as described in the [Creating a Group on RCM](#) section.

Using CLI

RCM can be installed in silent mode via a command line, using either the RCM qualifiers or the MSI.

To install using qualifiers:

1. From the command prompt, issue the following command:

```
set RW_INSTALL_MODE=silent
```

2. The basic installation script/command should be:

```
Set RW_INSTALL_PARAMS=ADDLOCAL=RCM_ROOTDIR,RWRM_CONSOLE,  
RWRM_ORG ADMIN_USER=user_name ADMIN_PASS=password ADMIN_DOMAIN=domain
```

If you are installing the RCM Organizer component, make sure you include the credentials of a local administrator or a member of the Administrators Group:

```
ADMIN_USER=user_name ADMIN_PASS=password ADMIN_DOMAIN=domain
```

NOTE: To override the RCM default installation folder (C:\Program Files\RepliWeb), include `INSTALLDIR=<installation path>` in the command.

For example:

```
Set RW_INSTALL_PARAMS=ADDLOCAL=RCM_ROOTDIR,RWRM_CONSOLE,RWRM_ORG  
ADMIN_USER=user_name ADMIN_PASS=password ADMIN_DOMAIN=domain  
INSTALLDIR="d:\RepliWeb"
```

NOTE: You must specify `RCM_ROOTDIR` in any component combination (Organizer only or Organizer and Console).

3. Run the relevant RCM kit, for example, `RCM_x86.exe /s`

RCM should now be now installed on your machine.

To install using MSI

1. Extract the installation `.exe` file to a folder of your choice. The folder should now contain all the files that are required for the installation.
2. Install **Microsoft Visual C++ 2008 Redistributable** as follows:

On a 32-bit computer, run:

```
vc_redist_x86.exe /q:a /c:"msiexec /i vc_redist.msi /qb!"
```

On a 64-bit computer, run:

```
vc_redist_x64.exe /q:a /c:"msiexec /i vc_redist.msi /qb!"
```

3. The basic installation script/command should be as follows, run it from the command prompt or from a script:

NOTE: You must specify `RCM_ROOTDIR` in any component combination (Organizer only or Organizer and Console).

```
msiexec /i rcm.msi /qb- ADDLOCAL=RCM_ROOTDIR,RWRCM_CONSOLE,RWRCM_ORG
ADMIN_USER=user_name ADMIN_PASS=password ADMIN_DOMAIN=domain
```

Components such as `RWRCM_CONSOLE` should be separated by a comma, and qualifiers such as `INSTALLDIR` should be separated by a space.

If you are installing the RCM Organizer component, include the credentials of a local administrator or a member of the Administrators Group:

```
ADMIN_USER=user_name ADMIN_PASS=password ADMIN_DOMAIN=domain
```

NOTE: To override the RCM default installation folder (**C:\Program Files\RepliWeb**), include `INSTALLDIR=<installation path>` in the command.

Silent Mode Options

Option	Description
<code>qn+</code>	No UI except for a modal dialog box displayed at the end.
<code>qb-</code>	Basic UI with no modal dialog boxes.
<code>qb+</code>	Basic UI with a modal dialog box displayed at the end. The modal box is not displayed if the user cancels the installation.

NOTE: `/qb+` is not a supported UI level.

Additional Installation Options

The following options are available for both the msi and qualifiers installation methods.

The examples used are for the qualifiers method:

To configure SMTP email configuration, issue the following command:

```
Set RW_INSTALL_PARAMS=ADDLOCAL=RCM_ROOTDIR,RWRCM_ORG,RWRCM_CONSOLE,
ADMIN_USER=user_name ADMIN_PASS=password ADMIN_DOMAIN=domain
SMTPHOSTNAME="10.0.12.5" SENDER="james@company.com" AUTH_USER="james"
AUTH_PASS=***
```

To set a new port for each service, issue the following command:

NOTE: This option overwrites the default RCM ports.

```
Set RW_INSTALL_PARAMS=ADDLOCAL=RCM_ROOTDIR,RWRCM_CONSOLE,RWRCM_ORG
ADMIN_USER=user_name ADMIN_PASS=password ADMIN_DOMAIN=domain
FCOPY_PORT="port value" REPLIWEB_CM_PORT="port value"
REPLIWEB_SCHED_PORT="port value"
```

NOTE: You should set these ports on a clean installation.

Creating a Group on RCM

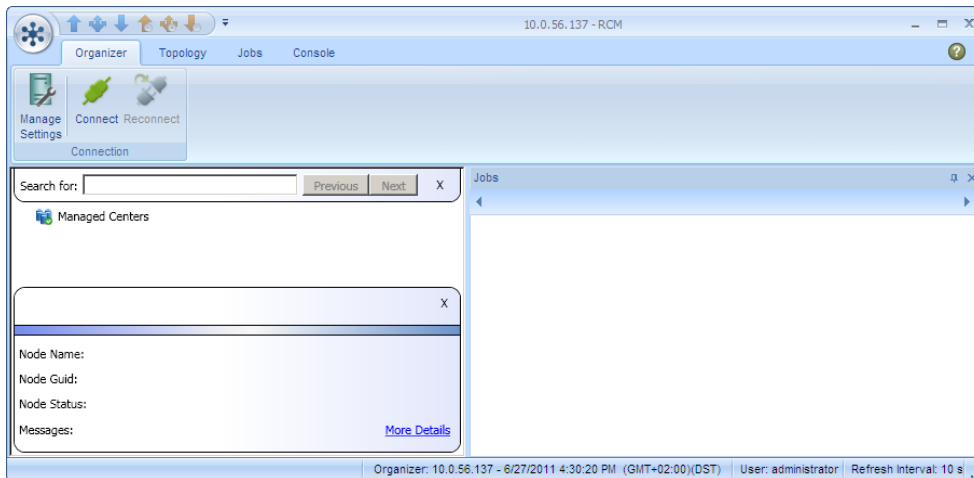
This chapter explains how to create an RCM Group node, which will contain the new R-1 Managed Node. Through this Group, the RCM administrator will be able to assign job configurations and Center Management settings to all the Group members.

Using Console GUI

To create a Group on RCM using GUI:

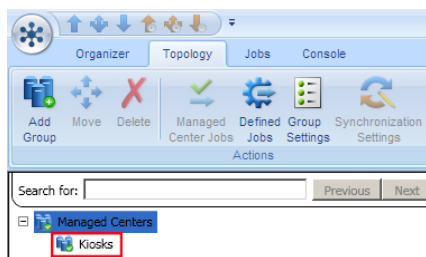
1. Connect to the RCM Organizer.

The **RCM Console** screen is displayed:



2. From the **Topology** ribbon, click the **Add Group** button and specify a name for the new Group. For example, "Kiosks".

The new Group appears under the selected parent group in the topology. For example:



3. In the RCM topology, select the Group that will include the new Managed Node.

Next, configure your R-1 installation as a Managed Node on RCM, as described in the [Configuring R-1 as a Managed Node on RCM](#) chapter.

Using CLI

The `org_add` command adds new Groups to the Organizer.

For more information, refer to the **Org_Add Command** section *RCM User Guide*.

Example

Adding Group “Main Group” to Group “Company”:

```
>rcm org_add -org=org_server -org_user=administrator -  
org_pass=***** -parent=root\Company -node_name=\"Main Group\"  
Node <root\Front Desk\Main Group> added.
```

Qualifiers

`-type=group`

(Optional) Specifies to add a Group.

group – Adds a Group to the Organizer.

`-node_name=node_name`

Specifies the name of the new Group on the Organizer.

`-parent=root|parent_group_path`

(Optional) Specifies the full path and name of the parent Group that the new Group will be added to. Omitting this qualifier will create the Group under the Organizer root.

root – Specify “**root**” to add the Group to the root level.

parent_group_path – Specify the path of the new Group on the Organizer.

For example, `-parent=\"root\\TeamGroup\"`

6. Configuring R-1 as a Managed Node on RCM


This procedure guides you on how to configure R-1 as a Managed Node on the RCM Organizer and also associate this Managed Node to an existing Group on the Organizer.

Job configurations and settings assigned to this Managed Node or to its Group will be pulled by it, as needed. Additionally, upon connection to the Organizer, each Managed Node may push its health status to the Organizer for monitoring purposes.

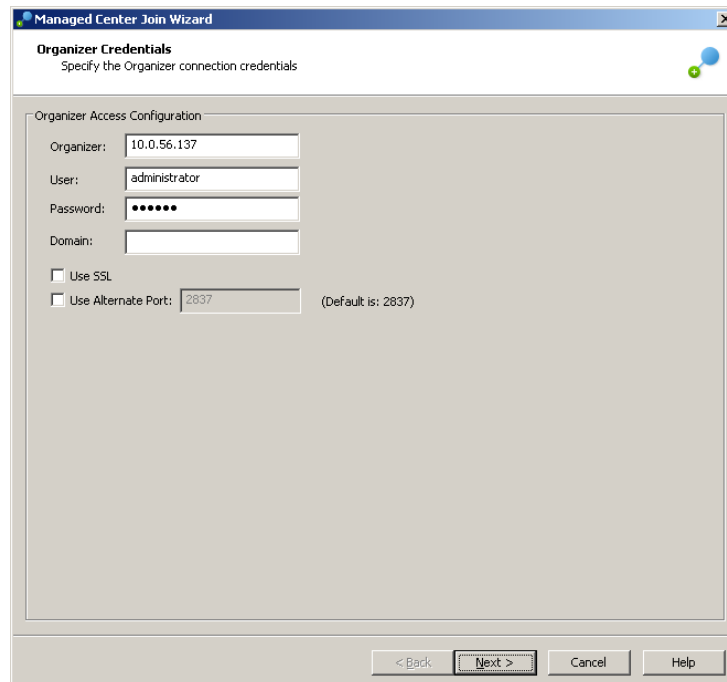
NOTE: Before configuring R-1 as a Managed Node, please make sure the Organizer has already been installed and contains the relevant Group(s).

Using Console GUI

To configure R-1 as a Managed Node:

1. Connect to the R-1 installation you wish to join.
2. From R-1 Console's **Manage** menu or ribbon, click the **Join** button ().

The **Managed Center Join Wizard** appears:



Managed Center Join Wizard

Organizer Credentials
Specify the Organizer connection credentials

Organizer Access Configuration

Organizer: 10.0.56.137

User: administrator

Password:

Domain:

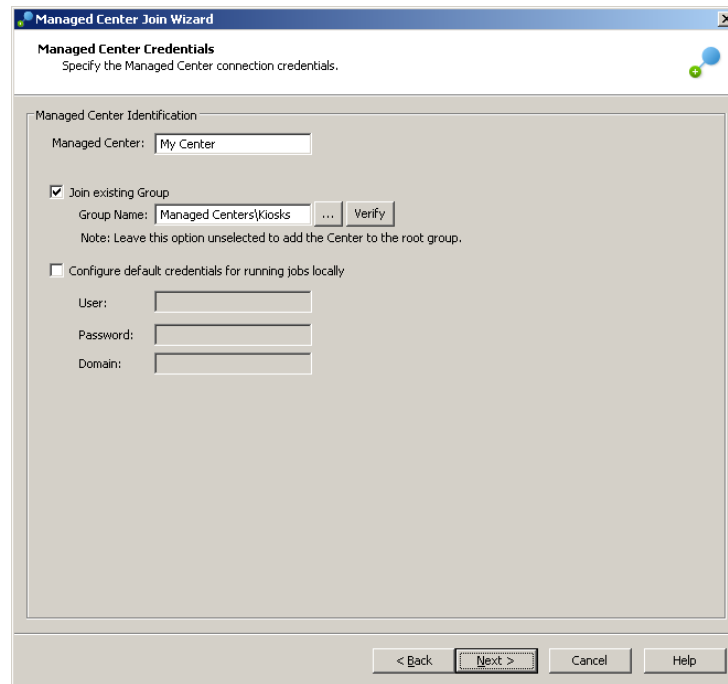
Use SSL


Use Alternate Port: 2837 (Default is: 2837)

< Back Next > Cancel Help

3. In the **Organizer Credentials** screen, specify the credentials of the Organizer you wish to join. These credentials are only used for the initial connection which joins the Managed Node to the Organizer.
4. Click **Next**.

The **Managed Center Credentials** screen appears:



5. In the **Managed Center Credentials** screen, specify the Managed Node's name on the Organizer. You can also specify a Group to associate it to as well as the default user credentials for running jobs locally on the Managed Node.
 - a. In the **Managed Center** field, specify the name of the Managed Node as you want it to appear in the Organizer topology.
 - b. To join the new Managed Node to an existing Group in the Organizer, select the **Join existing Group** checkbox, and click the  button to browse for the Group you want to join.

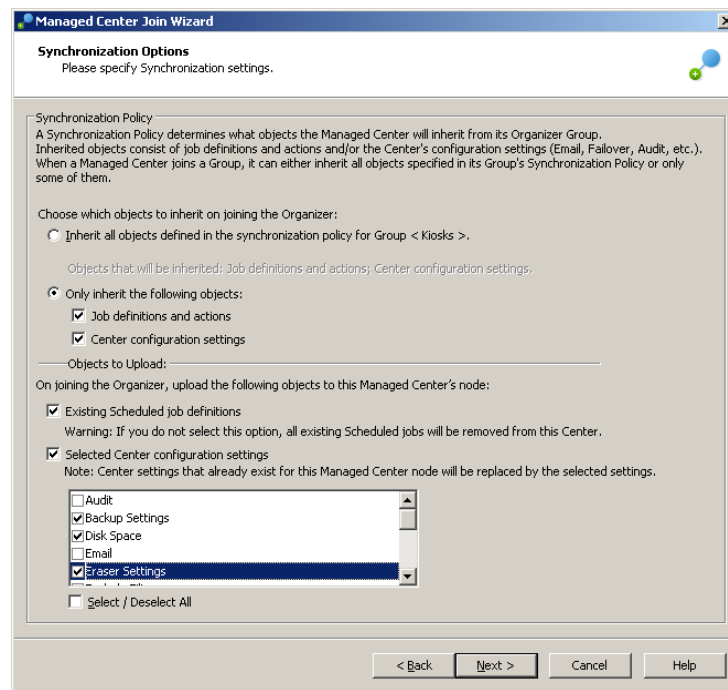
Click the **Verify** button to make sure the Group you specified is a valid Group on the Organizer.

NOTE: Leaving the **Join existing Group** checkbox unselected will result in this Managed Node being added to the Organizer root group.

- c. To specify the default user credentials for executing jobs that were pulled from the Organizer on this Managed Node, select the **Configure default credentials for running jobs locally** checkbox and enter the **User**, **Password**, and **Domain** of the default user.

6. Click **Next**.

The **Synchronization Options** screen appears:

7. In the **Synchronization Options** screen, select to maintain both the Center's jobs and Center Management settings (i.e., pull from or push to the Organizer upon connection), as follows:

- a. Select which settings to inherit:
 - Select the **Inherit all objects in the synchronization policy for Group** option to apply any job definitions and/or Center Management settings assigned to the Managed Node's parent Group.
 - Select the **Only inherit the following objects** option to specify specific objects (jobs, Center Management settings) to synchronize.
 - i. Select the **Job definitions and actions** checkbox to pull any job definitions and actions that were assigned to this Managed Node or to its Group from the Organizer.
 - ii. Select the **Center configuration settings** checkbox to pull any Center Management settings that were assigned to this Managed Node or to its Group from the Organizer.
- b. Select the **Existing Scheduled job definitions** checkbox to migrate existing Scheduled job definitions from this Managed Node to the Organizer. Migrated jobs are associated with the Managed Node that pushed them.

This option is enabled if you selected either the **Inherit all objects defined in the synchronization policy for Group** option or **Job definitions and actions**

checkbox.

Warning: Leaving this option unselected will remove all Scheduled and Continuous Update jobs existing on this Managed Node during synchronization with the Organizer.

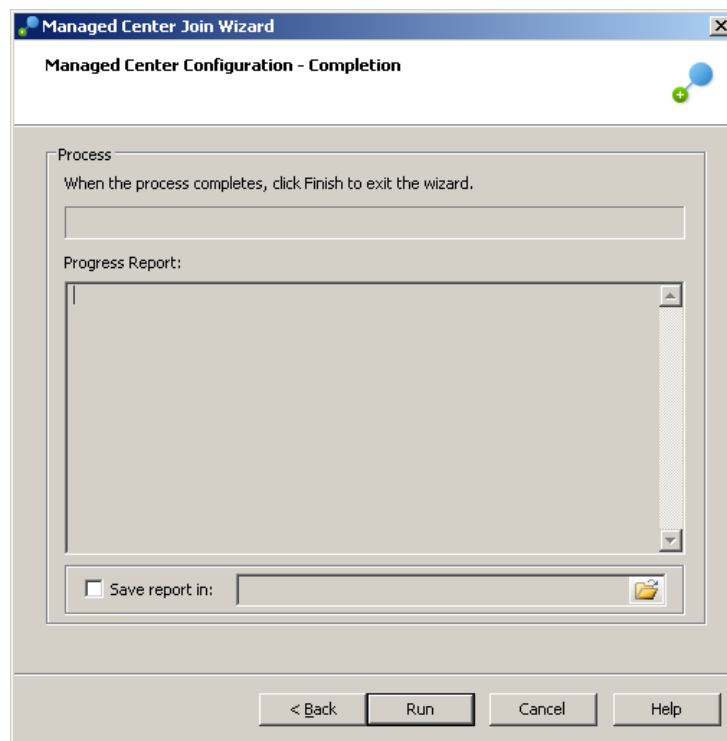
- c. To override specific Center settings with those assigned by the Organizer, select the **Selected Center configuration settings** checkbox and select the settings you want to save.

Overridden settings are saved on the Organizer for future use. For example, if this Managed Node needs to be detached from the Organizer, these saved settings can be reapplied to the Center.

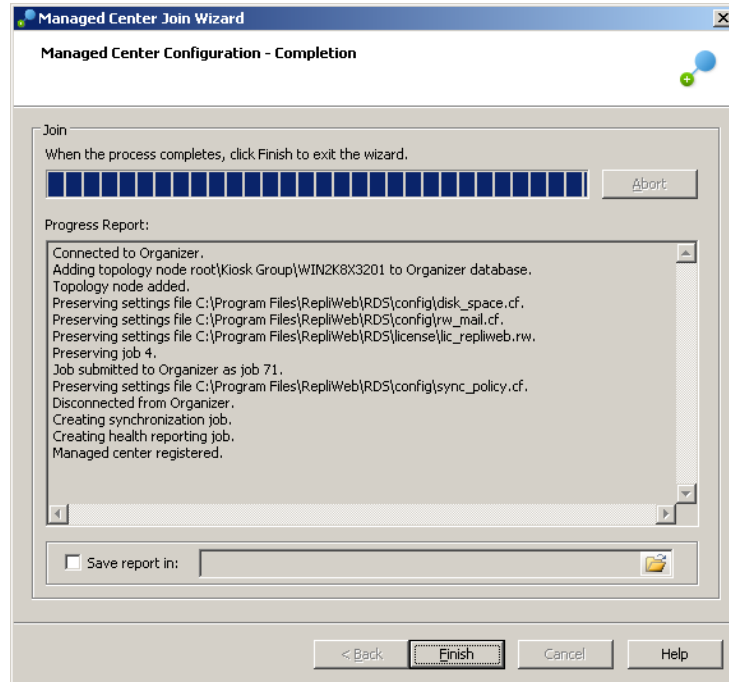
This option is enabled if you selected either the **Inherit all objects defined in the synchronization policy for Group** option or **Center configuration settings** checkbox.

8. Click **Next**.

The **Configuration Completion** screen appears:



9. Click the **Run** button to configure this Center as a Managed Node.



Using CLI

The `join` command enables you to join a Center to the Organizer topology, set its (Organizer and R-1 Center) connection credentials, job and Center configuration synchronization policies, and whether to migrate jobs from the Center to the Organizer.

For more information, refer to the **Join Command** section in the *R-1 User Guide*.

Example:

This command joins the Managed Center to an Organizer and configures the Managed Center to synchronize jobs and Center Management settings.

```
>managed_center join -org=10.0.51.24 -org_user=org_admin -
org_pass=*** -group=root\Kiosks -node_name=host_name -
use_default_credentials -center=localhost -center_user=james -
center_pass=*** -sync_contents=\"jobs,settings\"
Connected to Organizer
Adding topology node root\Kiosks\p-james-doe.compint.com to
Organizer database
Topology node added
Preserving settings file C:\Program Files\RepliWeb\RDS\config\
hosts
Preserving settings file C:\Program Files\RepliWeb\RDS\config\
sync_policy.cf
Deleting center's scheduled jobs
Creating synchronization job
Creating health reporting job
Managed Center registered
```

Example:

This command joins the Managed Center to an Organizer and configures the Managed Center to synchronize settings while preserving the original License, Scheduler and Email settings.

```
>managed_center join -org=10.0.56.24 -org_user=org_admin -
org_pass=*** -group=root\Kiosks -node_name=configure -
name=10.0.51.156 -use_default_credentials -center=10.0.51.156 -
center_user=james -center_pass=*** -sync_contents=settings -
preserve_settings=\"license,scheduler,email\"
Connected to Organizer
Adding topology node root\Kiosks\localhost to Organizer database
Topology node added
Preserving settings file C:\Program
Files\RepliWeb\RDS\config\hosts
Preserving Center Management settings file rw_mail.cf with
default R1 settings
Preserving settings file C:\Program
Files\RepliWeb\RDS\config\server.conf
Preserving settings file C:\Program
Files\RepliWeb\RDS\license\lic_repliweb.rw
Preserving settings file C:\Program
Files\RepliWeb\RDS\config\sync_policy.cf
Deleting old synchronization job instances
```

```

Creating synchronization job
Creating health reporting job
Managed Center registered

```

Qualifiers

`-use_ssl|-nouse_ssl`

Specifies to R-1 that all communication to the Organizer will be over SSL. By default, SSL is not used. For a detailed explanation about R-1 security, see the *R-1 SSL Guide*.

`-group=group_name`

Associates the Center to the specified Group in the Organizer topology.

NOTE: `group_name` is not case-sensitive.

`-node_name=managed_center_id`

Specifies the Managed Center name on the Organizer. For the joined Managed Center, the following can be specified:

host_name – Specifies the Managed Center name as its hostname.

configure – Specifies the `-name` value as the Managed Center name. (Used with `-name`)

`-name=new_managed_center_name`

(Used with `-node_name=configure`) Specifies the name of the new Managed Center.

`-use_default_credentials|-nouse_default_credentials`

Specifies whether to maintain the default Center credentials for the jobs pulled by the synchronization process. The default is `-nouse_default_credentials`.

`-sync_contents=jobs|settings|inherit`

Specifies which contents to synchronize (pull) from the Organizer.

None – Do not synchronize any contents.

Jobs – Synchronize any Scheduled and Continuous Update jobs assigned to this Managed Center or to its Group.

Settings – Synchronize any settings assigned for this Managed Center or to its Group.

Inherit – (Cannot be specified together with **jobs** and/or **settings**) Apply the synchronization definition of the node's parent Group.

`-migrate_existing_jobs|-nomigrate_existing_jobs`

(Used with the `-sync_contents=jobs`) Specifies whether to migrate all existing Scheduled and Continuous Update jobs from the Center to the Organizer.

Use this qualifier if you want to upload existing jobs from the Center to the Organizer. Once uploaded, these jobs will be managed by the Organizer. Omitting `-migrate_existing_jobs` causes all migrated, Scheduled, and Continuous Update jobs that exist on the Center to be deleted after joining the Center to the Organizer.

`-preserve_settings="all,license,hosts_list,scheduler,email,audit,early_notification,end_notification,user_definitions,rules,ssl_console_client,ssl_console_server,ssl_center_client,ssl_center_server,disk_space,failover,sync_policy,eraser,backup"`

(Used with `-sync_contents=Settings`) Specifies a list of original Center settings to maintain on the Managed Center.

NOTE: The Managed Center's host settings are automatically preserved.

Setting	Description
disk_space	Defined disk space thresholds and system response to disk space problems or shortages that might occur.
failover	Failover process settings. R-1 Failover ensures a backup server is used in if R-1's primary server is temporarily shut down.
email	Email configuration settings.
rules	R-1 connection security rules.
users	Real and virtual users defined for connection to R-1.
ssl_console_client	SSL authentication settings for the Console client.
ssl_console_server	SSL authentication settings for the Console server.
ssl_center_client	SSL authentication settings for the Center client.
ssl_center_server	SSL authentication settings for the Center server.
sched_settings	Scheduler server settings.
audit	Audit Information settings, including the periods for keeping an audit of user-initiated actions, Center Management changes and Scheduler-initiated actions.
license	R-1 license.
eraser	Eraser settings. R-1 Eraser is responsible for purging expired data.
backup	Backup settings. R-1 Backup enables users to run a backup of the R-1 Center that can be used to revert back to in the future. Backup records existing settings, such as jobs, settings, templates, preferences, and more.
sync_policy	Managed Center-Organizer synchronization settings.
early_notification	Early Warnings notification settings. Early Warnings enables automatically sending a notification to the defined recipient, Windows Event Viewer or to UNIX Syslog if a job enters recovery for some reason.
end_notification	On Completion notification settings. On Completion enables automatically sending a notification to the defined recipient, Windows Event Viewer or to UNIX Syslog according to the job's completion status (Success, Abort or Error).