

R-1 v5.0.1 Release Notes

August 2011

RepliWeb Deployment (R-1) is an industry-leading application release automation and content replication suite. Installed in over one thousand organizations, RepliWeb Deployment accelerates the production release of applications, code updates, and web deployment processes for organizations managing WinX, UNIX and Linux servers and application infrastructures.

The R-1 5.0 release improves IT Operations Team's ability to manage complex deployment processes throughout production environments via new job chaining, MSI "package" deployments, and auto-rollback capabilities. These new "automation" features can help Ops teams achieve continuous delivery goals, streamline application provisioning and configuration updates and reduce errors often associated with manual processes.

R-1 5.0 also introduces the new connectors for Microsoft's Team Foundation Server and an ever-improving Web User Interface. The TFS connector and enhanced WebUI will further improve Development Teams ability to execute, manage and monitor their respective code pushes to test and staging environments. The TFS Connector enhances and accelerates "build-deploy" methodologies, allowing R-1 jobs to be executed straight from the TFS interface. The R-1 TFS connector also addresses auditing requirements to link delivery stages/status with specific builds.

Ultimately, the R-1 5.0 release is helping organizations bridge the gap between application development and operations teams, and streamline deployment processes across complex application infrastructures.

New features:

- **MSI file deployment** – Purpose-built jobs designed to deploy MSI files. R-1 5.0 enables deploying MSI files along with required parameters and installation-related files required by the MSI.
- **Job chaining** – Chaining of a business process that requires multiple jobs execution. A new Job Chain feature enables you to automatically execute one or more jobs upon the successful completion of a previous job in a desired order.
- **Global exclude** - The Exclude Filter option enables administrators to define which files to exclude from all replication and distribution jobs on a specific Center.
- **Auditing Center job commands / configurations** - Auditing of configuration changes and scheduler activities. Administrators can use the Audit Trail feature to keep information relating to job commands and configuration changes performed on the Center. This information can then be retrieved for further analysis using R-1 Web Service.
- The **PAM Authentication** tab enables UNIX users to use their own account credentials for connection to different UNIX machines.

New connectors:

- **RepliWeb TFS Plug-in** - Now available as a Build Activity for Microsoft Visual Studio Team Foundation Server 2010, R-1 extends Application Lifecycle Management (ALM) by automating distribution of compiled binaries from the development tier to the testing tier.
- **RepliWeb Central Manager (RCM)** - R-1 5.0 supports integration with the new RCM Center-Server management product. RCM allows administrators to manage and control job settings and configurations across dozens to hundreds of RepliWeb-enabled servers (“enabled” servers require installation of the Scheduler component). RCM is ultimately engineered for topologies where job processing needs to be distributed across end-point servers vs. placing the load on one central server.
- **External Storage Connector via UNC Paths** - For organizations with Group or Enterprise licenses, R-1 5.0 now supports replication of files/directories to and from **UNC paths**.

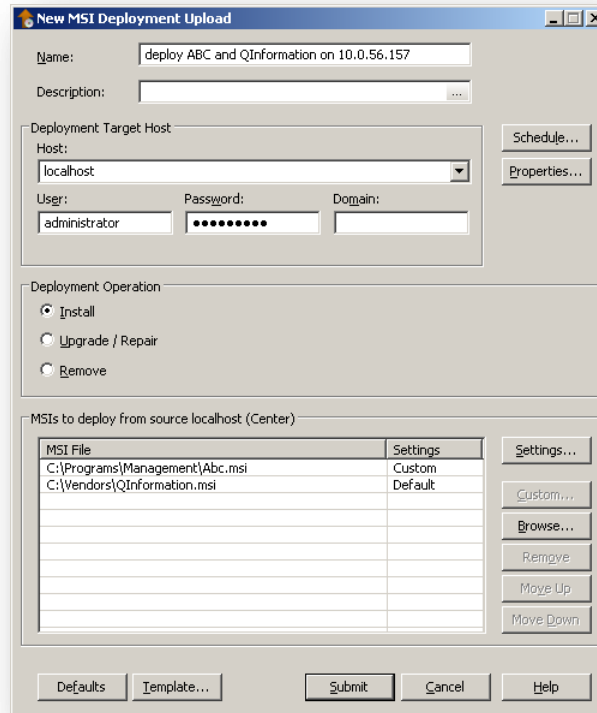
Enhancements:

- R-1 Console GUI now uses a new Ribbon look and feel that can be optionally switched back to the Classic menu view from previous versions. Additionally, the Console's Job List now offers main list grouping and sorting capabilities as well as improved Console Pane organization.
- Notifications were separated from the other On Exit procedures to enable configuring both in the same job.
- Include / Exclude file specifications can now be imported from, or exported to, an external file.
- Auto Rollback Pre / Post execution commands have been added.
- New IIS 7 / 7.5 configuration replication capabilities have been added.
- .NET Assembly GAC can now be replicated using CLR 4.0.
- Job Preview windows in R-1 Web UI can be set to *Read Only* mode.
- Web UI columns can now be resized.

New Features

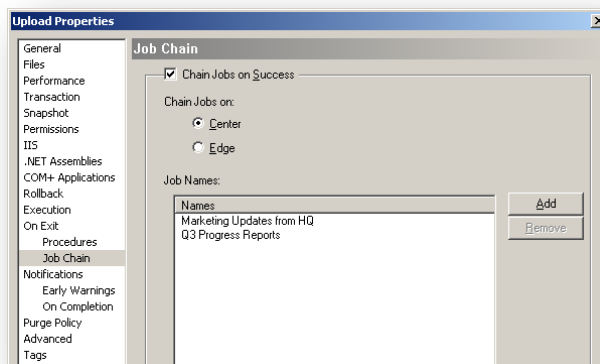
MSI Deployment

RepliWeb introduces a new functionality for deploying one or more MSI files, in a desired order, to target machines along with files relevant for the MSI's installation (like configuration or license files) and any required generic or custom installation parameters. The MSI files are replicated to, and executed silently on the target.

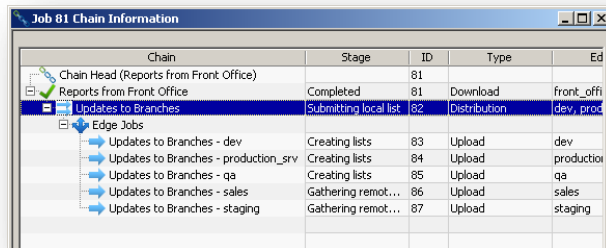


Chaining Jobs

Use this feature to implement dependency-based job execution in which one or more jobs are executed upon the successful completion of a previous job. Additionally, for multiple Center environments, chaining jobs located on different Centers is supported.



Users can also view a chain and its jobs through new job grouping and double-sorting capabilities in the main Job List, as well as through a new chain viewing dialog.



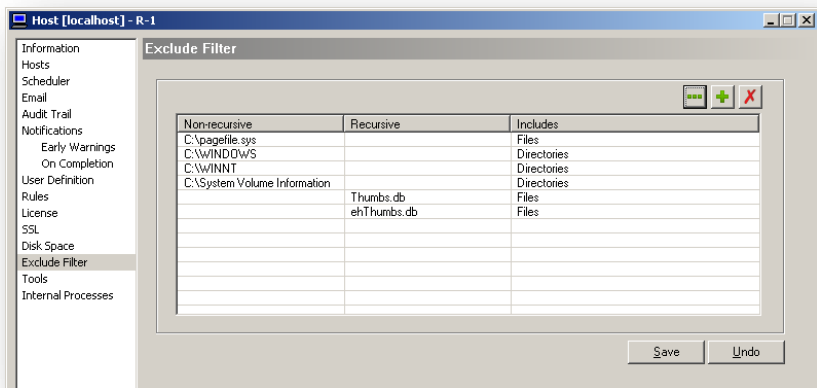
Chain	Stage	ID	Type	Ed
Chain Head (Reports from Front Office)		81		
Reports from Front Office	Completed	81	Download	front_offi
Updates to Branches	Submitting local list	82	Distribution	dev, prod
Edge Jobs				
Updates to Branches - dev	Creating lists	83	Upload	dev
Updates to Branches - production_srv	Creating lists	84	Upload	production
Updates to Branches - qa	Creating lists	85	Upload	qa
Updates to Branches - sales	Gathering remot...	86	Upload	sales
Updates to Branches - staging	Gathering remot...	87	Upload	staging

Center Management Additions

The following tabs have been added to the Center Management dialog.

Exclude Filter

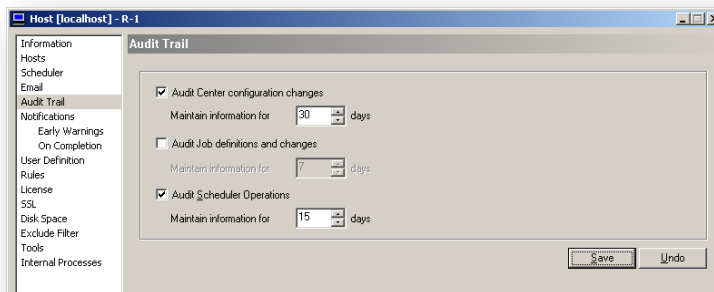
The Exclude Filter tab enables administrators to define a list of files and directories that will be excluded from all replication and distribution jobs.



Auditing Center Information

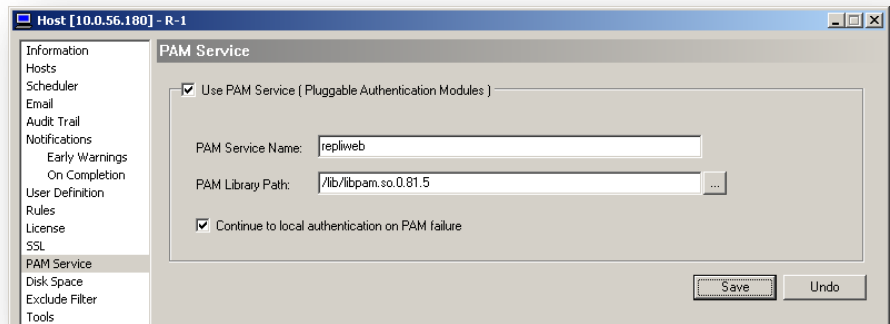
The new Audit Trail tab helps organizations keep track of their R-1 job and Center configuration activity. Using this tab, administrators can audit job commands (e.g., Abort, Resume and Submit);

Scheduler-initiated commands; and configuration changes performed on the Center (e.g., new hosts, Exclude Filter specifications and modified security rules). This information can then be retrieved using R-1 Web Service API.



PAM Authentication

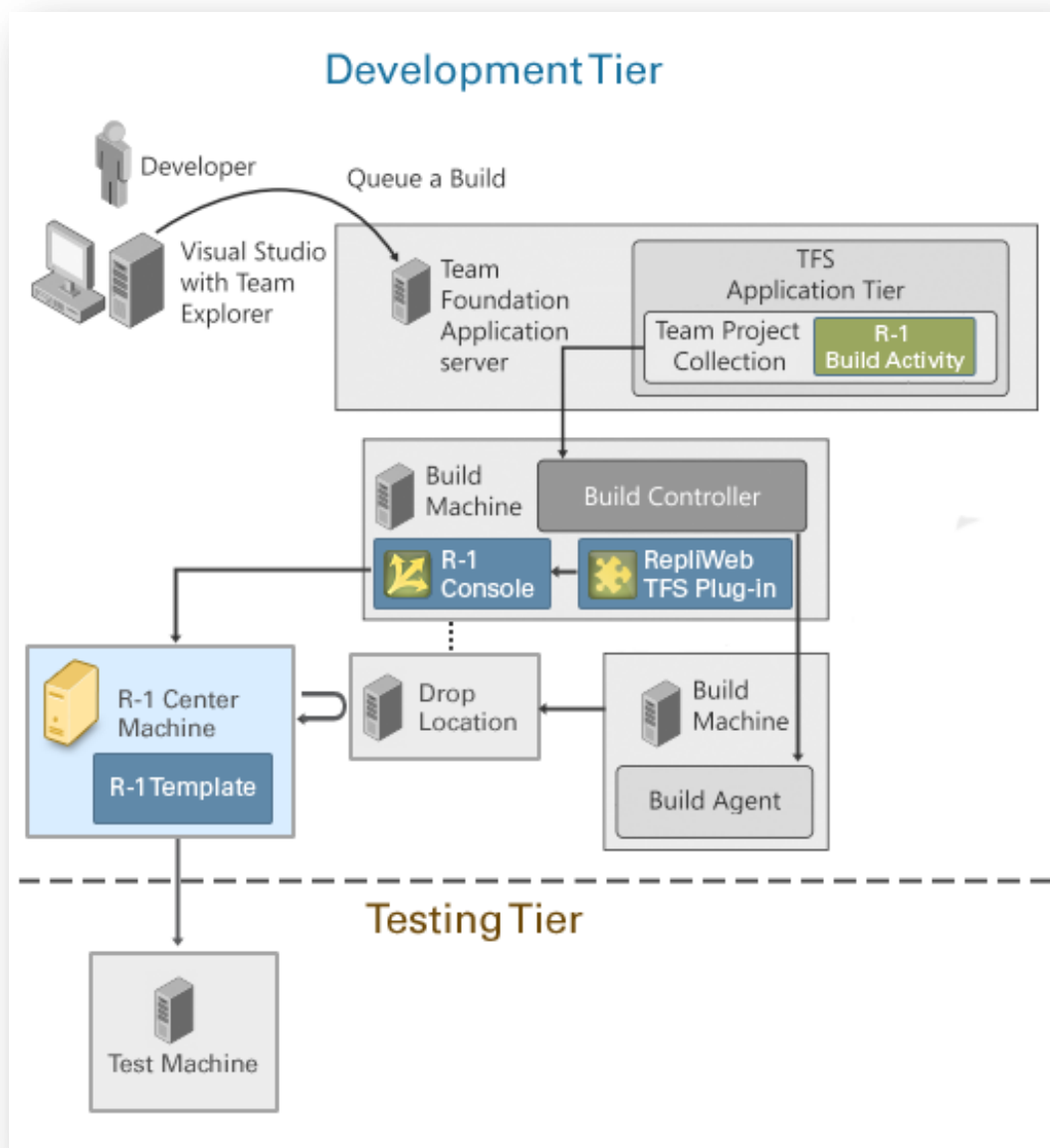
Using PAM authentication, R-1 administrators can enable users on LDAP repositories, such as Microsoft's Active Directory, to log into R-1 UNIX machines using their own account credentials without having to create a unique login account for each relevant UNIX machine.



New Connectors:

RepliWeb TFS Plug-in: R-1 Build Activity

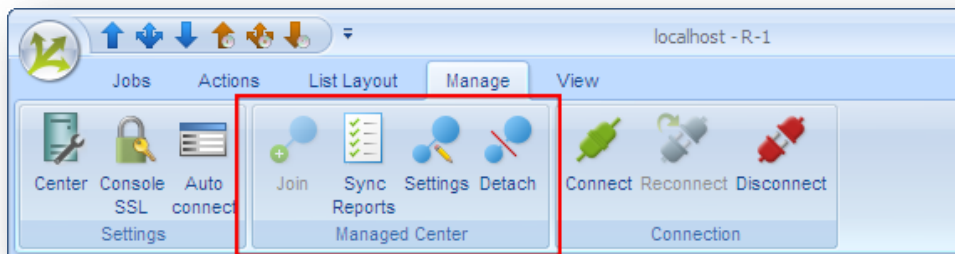
The R-1 TFS Build Activity extends Application Lifecycle Management by automating distribution of compiled binaries from the development tier to the testing tier. R-1 Build Activity seamlessly integrates with the Microsoft Visual Studio Team Foundation Server 2010 workflow, using standard TFS tools.



RepliWeb Central Manager

RepliWeb Central Manager (RCM) is a new product that enables administrators to manage large numbers of R-1 Center-enabled servers. With RCM, administrators can template, configure and assign specific jobs and configuration settings across hundreds of R-1 Centers. RCM also provides health status monitoring and unified reporting across large topologies. For more information, refer to RCM Release Notes or contact [RepliWeb Support](#).

NOTE: Through the Managed Center option in the R-1 Ribbon interface, access the easy-to-use wizard that configures a Center as and RCM Managed Center.



RCM is a standalone, separately licensed product.

Network Paths

To support replication to and from UNC paths, R-1 source and target Browse windows now enable selecting content located in network directories. This feature is available with Group or Enterprise licenses.

GUI Enhancements

Several GUI enhancements have been implemented in R-1 5.0, including:

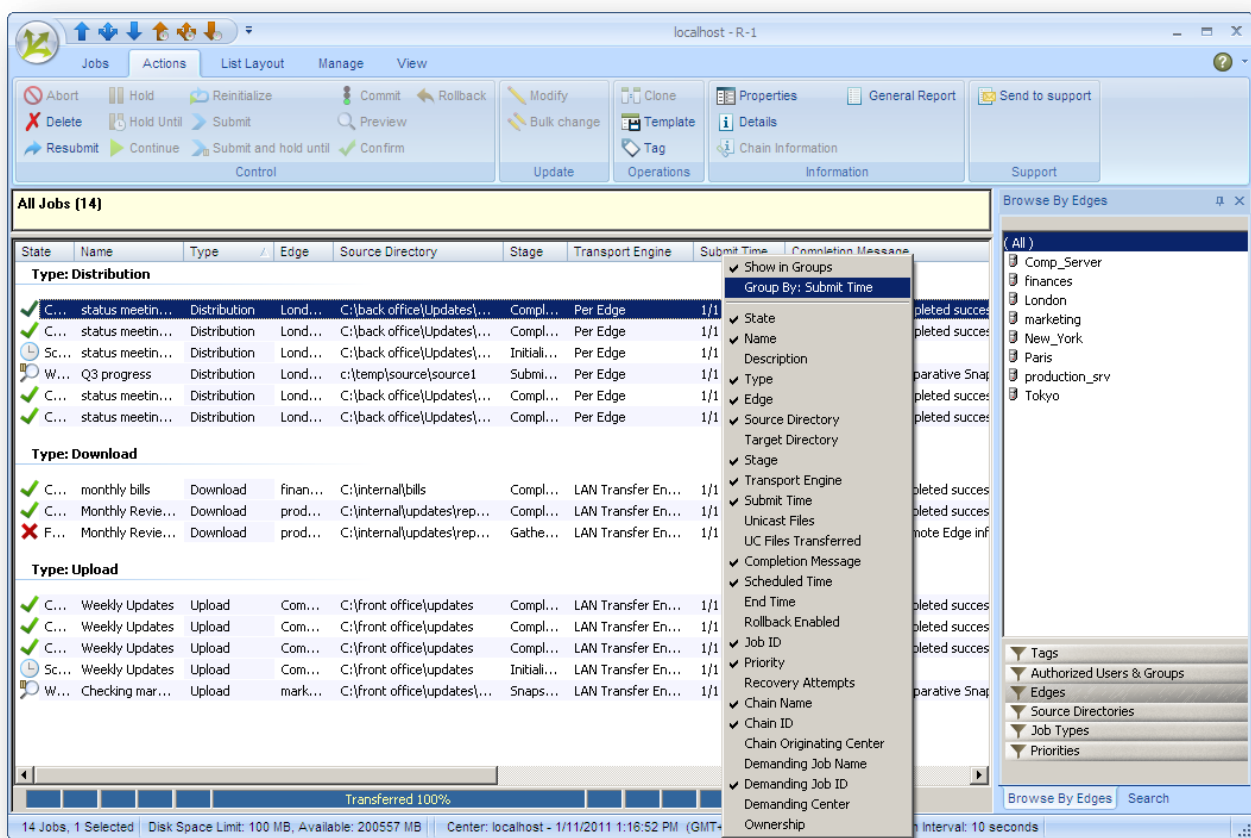
Console Ribbon User Interface

For easy access to R-1 functionality, a new Ribbon panel is provided in addition to the menus and toolbars found in previous R-1 versions. This panel organizes R-1 actions, buttons, and commands as a set of tabs, each grouping the relevant items. Using R-1 ribbons, you can easily navigate to the desired action, button or command.

NOTE: You can still choose to use the menu interface that has been used in past versions.

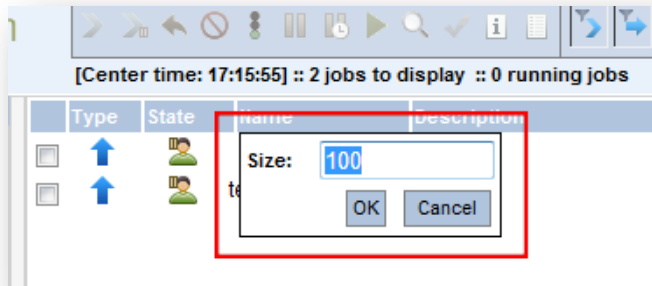
User Controls

R-1 5.0 Console extends job viewing capabilities by enabling users to sort and/or group jobs in the Job List according to a desired property. The new look and feel includes double sorting and Console Pane organization capabilities, as well as a new job icon graphics design.



Resizing Web UI Columns

Web UI column widths can now be changed through an easy-to-use column right-click dialog.



Feature Enhancements

The following feature enhancements are included in this version.

On Exit Processing – The Email Notification feature has been separated from the On Exit tab and now appears in the On Completion tab, enabling to configure both an email notification and an On Exit procedure to run upon job completion. The Early Warnings feature has been moved from the Recovery Options window to the Early Warnings tab. These tabs also appear in the Center Management dialog to enable configuring the On Completion and Early Warnings default settings.

Change Password utility – The Password utility no longer requires the old password.

Import / Export Files specifications – Include / Exclude file specifications can now be conveniently imported from, or exported to, an external file.

Pre / Post-Command for Auto Rollback – Pre / Post commands can now be configured to run in case the job is automatically rolled back.

IIS 7 Configuration enhancements – Users can now override target binding protocols. To improve compatibility of replicated configurations on the target, R-1 also enables replicating source server defaults along with IIS 7 configurations. Additionally, several enhancements have been made to improve FTP Site configuration replication.

.NET Assembly replication – .NET Assembly GACs can now be replicated with CLR 4.0.

R-1 Web UI can be customized to display job Preview windows in *Read Only* mode.

Fixed Issues

Version 5.0.1 includes fixes and improvements made since the release of version 5.0. Some of the more significant ones are addressed below.

GUI – Pre-Distribution Download jobs that have been created via CLI would not be displayed in the Console GUI's job list even though they would run properly.

Bulk Changes – Performing bulk update on multiple job templates is now supported.

UNIX

- Distribution jobs that were in recovery would fail because their snapshots would not be properly updated.
- R-1 jobs using Mirror synchronization logic would remove the Symbolic Links, to a directory, from the Linux target.
- In some scenarios, R-1 5.0 Centers would not work with 4.1.1 Edges.

Rollback – The **Auto Rollback** option would not work for Scheduled Distribution rollback jobs that have a subset file.

R-1 Web UI

- In some scenarios, R-1 Web UI would take a little longer to load.
- Job Chain-related columns in the R-1 Web UI can be resized by clicking the desired column and specifying the desired width.
- R-1 Information requests via R-1 Web UI would cause the `cgi.log` file to substantially grow.

Schedule – Jobs scheduled to run twice daily would spawn additional job instances out of schedule.

Version 5.0 introduced many fixes and improvements made since the release of version 4.1.1. Some of the more significant ones are addressed below.

Connection – Administrators can now limit the number of system processes and/or threads running on the Center at a time.

Replications

- For Distribution jobs using an alternate port, browsing Edge Override target folders is now supported.
- Replicating non-http IIS 7 binding protocol settings is now supported.
- Anonymous user passwords of IIS 7 websites are replicated correctly.
- Replicating .NET Assembly GACs with CLR 4.0 is now supported.

Scheduling – Center Trigger files are accessed by the job’s user context.

R-1 Web UI – Distribution Job Preview windows would not display the contents for Edges specified by IP address. This issue has been resolved for Chrome 8 and above.

Continuous Update – Manually reinitializing a Continuous Update job would cause the next scheduled synchronization to be initiated on delay.

Rollback – Administrator-defined jobs could not be rolled back by insufficiently privileged users.

UNIX – Setting sticky bit configurations in the job Permissions tab is now supported.

CLI – Wait settings can now be specified for Distribution jobs.

Bulk Changes – Several fixes were made to the Bulk Changes feature.

Reports

- Transfer reports for jobs that had been set to the **All files are one transaction** option would sometimes not report files that were being used on, or missing from, the target.
- Continuous Update Distribution job reports would not accurately report the number of deleted files.

Email configuration – Testing Email recipients would sometimes fail.

Error – When CDs had been inserted and then removed from the Center machine, R-1 Console would sometimes display a “No Disk” error.

####

For any additional information, contact us at support.repliweb.com