

SSIS CDC ACCELERATOR

A rapid solution for building change-data-capture projects in SSIS, using fully integrated wizards. The solution delivers efficient and real-time data integration by processing only the changes made to your source data.

CDC Benefits

- Reduce data latency and provide fresh data to decision makers
- No downtime and freed up processing time - by reducing or eliminating batch windows used for moving data
- Reduce the risk of not completing nightly batch data processing
- Dramatically reduce the required resources for ETL

Accelerator Benefits

- Fully integrated and proven with SSIS
- Accelerate solution delivery
- Very easy to use

Real-time and Efficient Data Integration

Included with SQL Server 2005 at no extra cost, SQL Server Integration Services (SSIS) offers a comprehensive, powerful, and competitive solution for data integration and ETL (extract, transform, and load). The successor to Data Transformation Services (DTS), SSIS is a platform for a new generation of high performance data integration technologies. Yet, when addressing data integration requirements, many organizations face the following questions:

- What is the business impact of using fresh, timely information?
- How to deal with growing data volumes and shrinking batch windows?
- Can we reduce or eliminate batch windows to cut costs or better utilize resources?
- What is the risk and business impact if nightly batch processes fail?

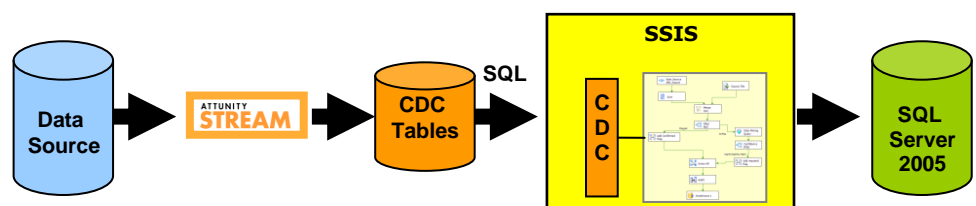
Change Data Capture (CDC) provides an answer to these questions. With CDC, you capture and process only the changes made to enterprise data sources, and you can:

- Source operational data efficiently and in real-time
- Support real-time data warehouses and data marts
- Reduce or totally eliminate batch windows required to move data
- Keep data sources in sync
- Enable event-driven and stream-based processing

The SSIS CDC Accelerator

Attunity's SSIS CDC Accelerator provides a complete CDC solution integrated with SSIS, supporting many data sources including Oracle and DB2 systems. Using fully integrated wizards, the solution automatically generates configurations and packages that capture and process only the changes made to your data. The result is a reduction in batch windows which delivers efficient and real-time data integration.

The SSIS CDC Accelerator leverages the proven Attunity Stream CDC product line, and includes integration and management components that provide an end-to-end solution with SSIS.



Supported Data Sources

- DB2 (Mainframe)
- DB2/400 (AS/400)
- Oracle 9i
- Oracle 10g
- SQL/MP (Tandem)
- SQL Server 2000
- SQL Server 2005

CDC for Non-Relational Sources

SSIS developers can use Attunity Stream to build CDC solutions for non-relational data sources that are not yet supported by the CDC Accelerator. These sources include:

- Adabas (Mainframe, UNIX, Windows, and OpenVMS)
- Enscribe (Tandem)
- IMS/DB (Mainframe)
- VSAM (Mainframe)

CONTACT ATTUNITY

North America
 T: +1 781 328 0960
 866-288-8648
sales@attunity.com

Europe, Middle East & Africa
 T: +44(0) 1344 742 805
info-uk@attunity.com

Asia Pacific
 T: + (852) 2756 9233
info-hk@attunity.com

Solution Components

Attunity CDC Configuration Wizard

- Define sources and target tables
- Configure required CDC Agents
- Configure change routing and staging rules

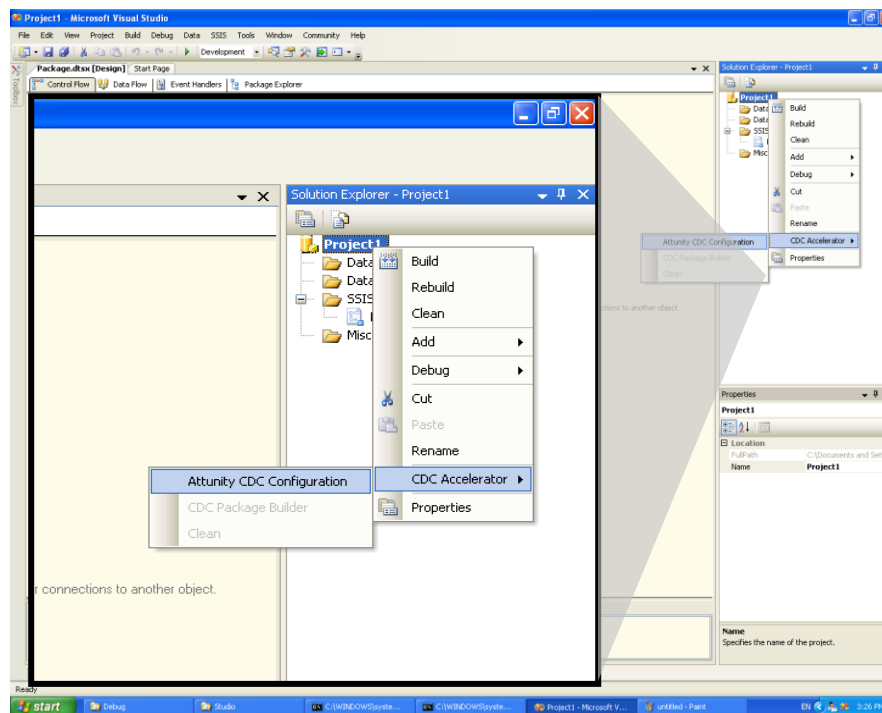
CDC Package Builder Wizard

- Map source to target
- Assign tables into CDC processing packages
- Automatically generates/updates CDC processing packages

CDC Management Tables

- Sequence and coordinate CDC processing and referential integrity
- Used for fault-resilience

SSIS CDC Accelerator - a seamless extension of SSIS



"The SSIS CDC Accelerator from Attunity is a good example of partners building products that extend the SSIS Data integration platform. Customers will appreciate the increased efficiency and real-time capabilities that change-data-capture (CDC) enables. The product is really easy to use and we are impressed by its functionality and its seamless integration with SSIS."

Microsoft

Donald Farmer
 Group Product Manager
 Microsoft Corporation