

Attunity iSeries DB2-CDC for SSIS

This product is a cost-effective, rapid and complete solution for replication and real-time integration of iSeries DB2 data using SQL Server Integration Services (SSIS).

Benefits

- Simplify and accelerate CDC implementation
- Deliver real-time information
- Design efficient data integration solutions
- Leverage existing SQL Server investments
- Reduce resources and costs

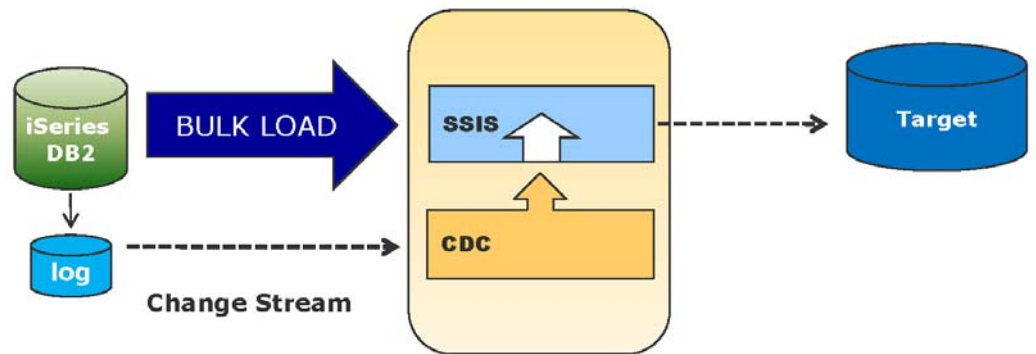
Why use Attunity CDC ?

- Minimal impact on the iSeries DB2 (source) systems
- Move data as it changes, in mini-batch, micro-batch or real-time
- Eliminate the need for data transfer batch windows
- Eliminate the risks associated with bulk/batch transfer failures
- Proven enterprise-class technology
- Easy-to-use

Operational Data Replication (ODR) & non-intrusive, real-time integration of iSeries DB2 data with Microsoft's SSIS

Attunity iSeries DB2-CDC for SSIS is the first and only tightly-integrated solution to provide an end-to-end operational data replication (ODR) solution for streaming real-time changing iSeries DB2 data leveraging SQL Server Integration Services (SSIS).

By leveraging log-based change-data-capture (CDC) technology, the product enables periodic or continuous integration for efficient and real-time data warehousing, operational reporting, heterogeneous data replication, and application synchronization ensuring data consistency. With intuitive and easy-to-use wizards, it dramatically simplifies and accelerates implementation and deployment times and reduces resource requirements and costs, all with minimal impact on the iSeries DB2 source systems.



Specifically designed for integration with SSIS, the Attunity iSeries DB2-CDC for SSIS enables users of Microsoft's SQL Server and Business Intelligence Platform to implement enterprise-class data replication, synchronization, and real-time business intelligence (BI) and data warehousing projects, quickly and efficiently, leveraging their existing SQL Server investments and resource skills.

Attunity iSeries DB2-CDC for SSIS key capabilities:

- Log-based, non-intrusive iSeries DB2 CDC, including filtering DB2 tables at the source
- Completely integrated into SSIS and the Business Intelligence Developer Studio
- Automatic generation of SSIS packages for CDC as well as full-loads of iSeries DB2 data
- End-to-end replication, including support for user customizations
- Management console for monitoring

Supported versions:

Source: DB2/400 on:

- iSeries 5.3
- iSeries 5.4
- iSeries 6.1

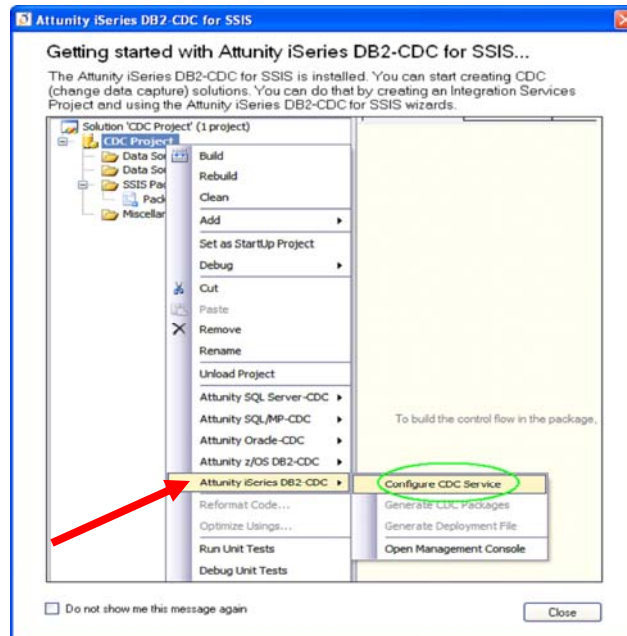
SSIS and target SQL Server:

- SQL Server 2005
- SQL Server 2008
- 32bit and 64bit (x64)

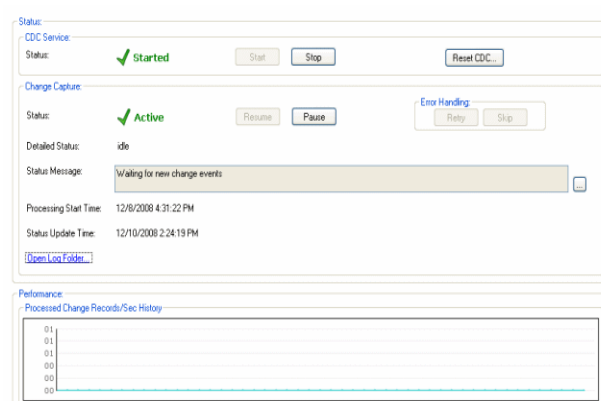
About Attunity:

Attunity is a provider of real-time data integration and event capture software. It has been selected by Microsoft to provide high-speed bulk connectors for Oracle and Teradata that are now available in SQL Server 2008 Integration Services, Enterprise Edition. The Attunity CDC Suite for SSIS features the award-winning Oracle-CDC for SSIS product and is also available for many other sources including DB2 on IBM iSeries, highlighted here.

Integrated into Microsoft Business Intelligence Development Studio



MMC-based Management Console for Monitoring and Control



CONTACT ATTUNITY

North America

T: +1 781 328-0960
1-866-288-8648
sales@attunity.com

Europe, Middle East & Africa

T: +44(0) 1344 742 805
info-uk@attunity.com

Asia Pacific

T: + (852) 2756 9233
info-hk@attunity.com

Microsoft Partnership:

"Microsoft SQL Server, as a business intelligence platform, provides customers with a powerful set of tools to integrate and manage their data in order to support modern business intelligence requirements. We value Attunity as a partner and its product suite extends SSIS to enable customers to address enterprise and real-time integration requirements across a heterogeneous environment using the tools and applications they are already familiar with."

Tom Casey

**General Manager of SQL Server Business Intelligence
Microsoft Corp.**