

Attunity HP NonStop SQL/MP-CDC for SSIS

This product is a cost-effective, rapid and complete solution for replication and real-time integration of HP NonStop SQL/MP data using SQL Server Integration Services (SSIS).

Operational Data Replication (ODR) & non-intrusive, real-time integration of HP NonStop SQL/MP data with Microsoft's SSIS

Attunity HP NonStop SQL/MP-CDC for SSIS is the first and only tightly-integrated solution to provide an end-to-end operational data replication (ODR) solution for streaming real-time changing HP NonStop SQL/MP data leveraging SQL Server Integration Services (SSIS).

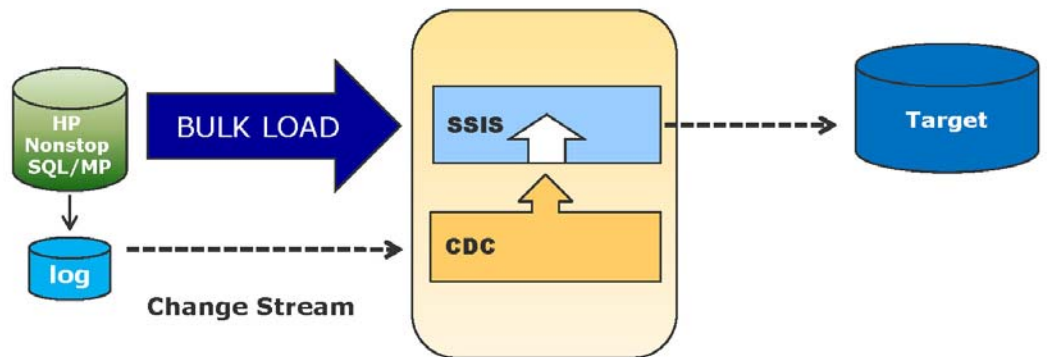
By leveraging log-based change-data-capture (CDC) technology, the product enables periodic or continuous integration for efficient and real-time data warehousing, operational reporting, heterogeneous data replication, and application synchronization ensuring data consistency. With intuitive and easy-to-use wizards, it dramatically simplifies and accelerates implementation and deployment times and reduces resource requirements and costs, all with minimal impact on the HP NonStop SQL/MP source systems.

Benefits

- Simplify and accelerate CDC implementation
- Deliver real-time information
- Design efficient data integration solutions
- Leverage existing SQL Server investments
- Reduce resources and costs

Why use Attunity CDC ?

- Minimal impact on the HP NonStop SQL/MP (source) systems
- Move data as it changes, in mini-batch, micro-batch or real-time
- Eliminate the need for data transfer batch windows
- Eliminate the risks associated with bulk/batch transfer failures
- Proven enterprise-class technology
- Easy-to-use



Specifically designed for integration with SSIS, the Attunity HP NonStop SQL/MP-CDC for SSIS enables users of Microsoft's SQL Server and Business Intelligence Platform to implement enterprise-class data replication, synchronization, and real-time business intelligence (BI) and data warehousing projects, quickly and efficiently, leveraging their existing SQL Server investments and resource skills.

Attunity HP NonStop SQL/MP-CDC for SSIS key capabilities:

- Log-based, non-intrusive HP NonStop SQL/MP CDC, including filtering at the source
- Completely integrated into SSIS and the Business Intelligence Developer Studio
- Automatic generation of SSIS packages for CDC as well as full-loads of HP NonStop SQL/MP data
- End-to-end replication, including support for user customizations
- Management console for monitoring and control

Supported versions:

Source: SQL/MP on:

- HP NonStop S-Series
- HP NonStop NS-Series
- HP NonStop Blades

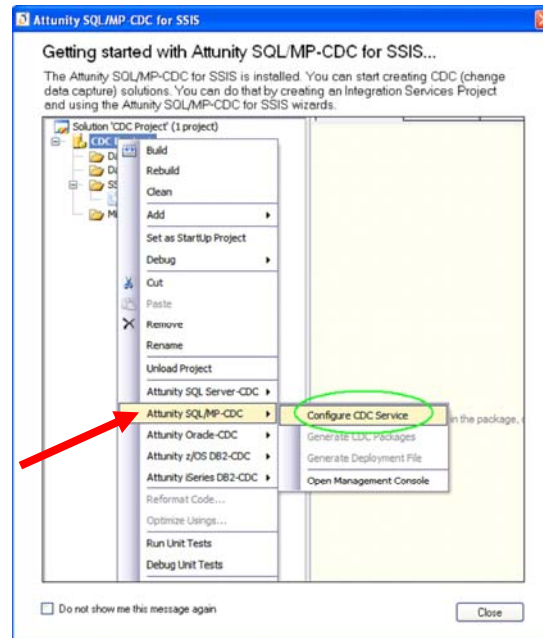
SSIS and target SQL Server:

- SQL Server 2005
- SQL Server 2008
- 32bit and 64bit (x64)

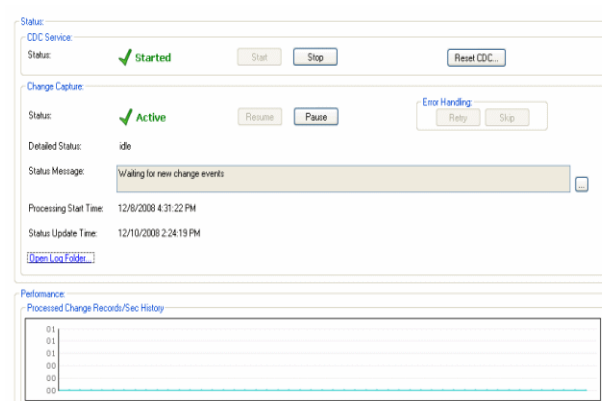
About Attunity:

Attunity is a provider of real-time data integration and event capture software. It has been selected by Microsoft to provide high-speed bulk connectors for Oracle and Teradata that are now available in SQL Server 2008 Integration Services, Enterprise Edition. The Attunity CDC Suite for SSIS features the award-winning Oracle-CDC for SSIS product and is also available for many other sources including HP NonStop SQL/MP, highlighted here.

Integrated into Microsoft Business Intelligence Development Studio



MMC-based Management Console for Monitoring and Control



CONTACT ATTUNITY

North America

T: +1 781 328-0960
1-866-288-8648
sales@attunity.com

Europe, Middle East & Africa

T: +44(0) 1344 742 805
info-uk@attunity.com

Asia Pacific

T: + (852) 2756 9233
info-hk@attunity.com

Microsoft Partnership:

"Microsoft SQL Server, as a business intelligence platform, provides customers with a powerful set of tools to integrate and manage their data in order to support modern business intelligence requirements. We value Attunity as a partner and its product suite extends SSIS to enable customers to address enterprise and real-time integration requirements across a heterogeneous environment using the tools and applications they are already familiar with."

Tom Casey

**General Manager of SQL Server Business Intelligence
Microsoft Corp.**